



“Our mission  
is to  
improve  
the health and  
well-being  
of the  
population.”

School of  
Public Health

Faculty Directory

1994-1996

# Table of Contents

|   |      |
|---|------|
| School of Public Health Mission .....                     | 2    |
| Area Descriptions .....                                   | 4    |
| Using This Directory .....                                | 6    |
| Faculty Listings .....                                    | 7-54 |
| Dean's Office .....                                       | 7    |
| Biostatistics.....  | 9    |
| Environmental Sciences & Engineering.....                 | 15   |
| Epidemiology.....   | 21   |
| Health Behavior & Health Education.....                   | 27   |
| Health Policy & Administration .....                      | 31   |
| Maternal & Child Health.....                              | 37   |
| Nutrition .....   | 41   |
| Public Health Nursing.....                                | 47   |
| Centers & Special Programs .....                          | 51   |
| Computing & Information Services .....                    | 51   |
| Institute for Environmental Studies .....                 | 51   |
| International Health.....                                 | 51   |
| Center for Health Promotion & Disease Prevention .....    | 51   |
| Injury Prevention Research Center .....                   | 51   |
| Public Health Leadership Program.....                     | 51   |
| Occupational & Environmental Health Studies Program ..... | 52   |
| Center for Public Health Practice.....                    | 53   |
| Subject Index .....                                       | 55   |
| Name Index .....  | 61   |

## School of Public

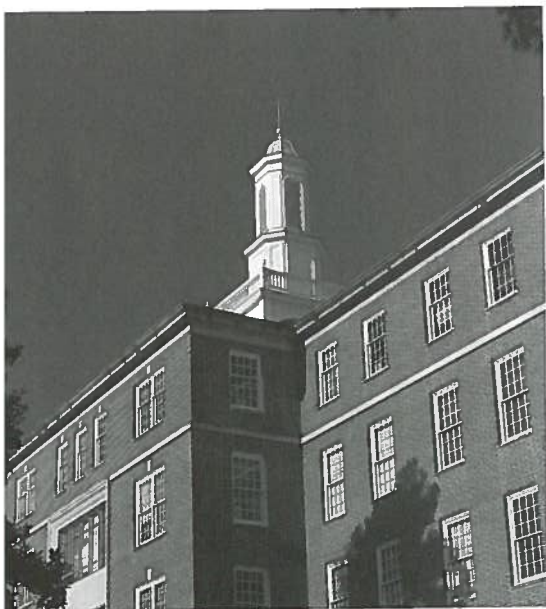
*The mission of the School of Public Health is to improve the health and well-being of the population.*

This mission is accomplished through the interaction of:

**Teaching**—to educate students to assume and to continue professional and leadership roles in public health practice, policy, research, and teaching.

**Research (basic and applied)**—to advance knowledge and understanding of the biological, social, behavioral, environmental, and economic factors affecting the health status of the population.

**Service and Professional Practice**—to provide broad-based technical assistance and consultation on public health issues; and to engage in scholarly community programs for the advancement of knowledge in the public and private sectors at local, state, national, and international levels.



*Photo by Alex Trembl*

# Health

The School of Public Health at the University of North Carolina in Chapel Hill—ranked among the top three schools of public health in the nation—is widely recognized as one of the premiere institutions of its type in the world.

The School has a strong history of service to the health of the public. Born during the Depression, it was the fourth such school to be founded in the nation and the first at a state university.

Today, our School is one of 26 public health schools accredited by the Council on Education for Public Health. Our scholars work in such diverse areas as hospital administration, water sanitation, biotechnology, family planning, occupational nursing, cardiovascular health and disease, youth violence prevention, urban air pollution, and cancer research. Academic areas include biostatistics, environmental sciences & engineering, epidemiology, health behavior & health education, health policy & administration, maternal & child health, nutrition, public health nursing, and public health leadership.

We have earned a world-class status through continued excellence in teaching, basic and applied research, and service to the public.

Our students are educated to assume and to continue professional and leadership roles in public health practice, policy, research, and teaching. And the teaching mission extends well beyond enrolled students through the continuing education classes and conferences that served more than 8,000 public health professionals last year.

The School advances knowledge and understanding of the biological, social, behavioral, environmental, and economic factors affecting the health status of the population. We see an important link between a healthy environment and healthy people, and our research targets ways to improve lives of the world's citizens today as well as those of generations to come. We are committed to improving the health of populations at greatest risk, including racial and ethnic minorities, children, and the poor. In addition, we are developing methods for measuring health status and for evaluating community-based health intervention programs.

We use the knowledge gained from this research to provide broad-based technical assistance and consultation on public health issues to public health leaders, government officials, and executives in business and industry.

Finally, we have a firm commitment to the future. Through comprehensive strategic planning, we will remain poised on the cutting edge of the health-care field. Searching for the causes and treatment of cardiovascular disease, developing an innovative nutrition curriculum for use in medical schools, exploring new ways to educate women about the importance of mammograms, seeking common bonds between traditional adversaries such as business and environmental groups—these are just a few of the ways the UNC-CH School of Public Health is touching lives today. We stand ready to meet the challenges of tomorrow.

## Overview

We have nine academic areas dedicated to our mission of preventing disease and promoting health:

### Department of Biostatistics

Faculty members in this area study the theory and methodology of biostatistics as they relate to health problems and solutions. They quantify the physical environment, characteristics of the population, patterns of disease and disability, health service utilization and costs, and many other areas related to human health.

### Department of Environmental Sciences & Engineering

This internationally acclaimed department is working to improve both public and environmental health through curricula and research in five program areas: air, radiation, and hygiene; aquatic and atmospheric sciences; environmental health sciences; environmental management and policy; and water resources engineering.

### Department of Epidemiology

This leading center for the study of health and disease in populations is home to faculty members who are constantly working to expand the world's knowledge of disease causation, prevention, and control. Specialties include infectious diseases, heart diseases, cancer, environmental/occupational exposures, reproductive issues, and health care.

### Department of Health Behavior & Health Education

Health-related behavior and social change, and communities, worksites, and medical-care settings are the interests of faculty in this top-rated department. Of special interest are the topics of cancer control and prevention, substance abuse prevention, injury control and violence prevention, patient education, rural and minority health, and aging.

### Department of Health Policy & Administration

Nationally ranked as one of the top three such programs, this department focuses its research and technical assistance activities in four areas: health-care policy analysis, health economics, and technology assessment; quality management and improvement and outcomes measurement; organizational design and behavior and leadership development; and health-care financial management. Projects are conducted at global, national, state, and local levels in both the public and private sectors.

### Department of Maternal & Child Health

This department is committed to improving the health of women, children, and their families—nationally and internationally—through research, practice, and advocacy. Our multi-disciplined faculty, grounded in practice-based research, examine public health problems and interventions from a population-based developmental perspective. Research topics include women's health, infant mortality, childhood injuries, adolescent health, and health policy issues.

As the only department of nutrition in the United States located in a school of public health and a school of medicine, research in this area focuses on how diet influences the health of humans. Research interests span from studies of molecular mechanisms in individuals to determinants of diet in population. Specialties include nutritional biochemistry, nutritional epidemiology, human clinical nutrition, and public health nutrition.

## **Department of Nutrition**

This area consists of a unique NLN-accredited program designed to prepare leaders in public health and occupational health nursing. Faculty members concentrate their research in the areas of community assessment, program planning, and development; policy development; and occupational health program design, implementation and evaluation.

## **Curriculum in Public Health Nursing**

This unique concentration in public health leadership allows mid-career professionals in local, state, and federal public health agencies to progress to leadership positions. The program's interdepartmental focus pulls from other academic areas, while also providing concentrated upper-level leadership training. Graduates of the program receive a doctor of public health degree (Dr.P.H.).

## **Program in Public Health Leadership**

**In addition to our academic areas, we have two units in the School to support and extend the School's mission:**

This center is home to a number of offices and programs: continuing education, public health practice and area health education centers (AHECs), the environmental resource program, the Kellogg Community-Based Public Health Initiative, and the program in public health leadership. The center's mission is to advance the knowledge base and practice of public health through academic teaching, technical assistance and consultation to community health agencies, continuing education, policy development and advocacy, and by developing and maintaining linkages and partnerships.

## **Center for Public Health Practice**

This division provides a variety of services to the School including management of administrative and office automation systems for staff and faculty and operation of a microcomputer laboratory for students. Computing consultation and problem-solving are also part of the day-to-day operation of this office.

## **Division of Computing & Information Services**

## Using This Directory

This is a directory of UNC-CH School of Public Health faculty members who are experts in a wide variety of fields, listed by academic areas. It is designed to provide an easy way to locate faculty members who are knowledgeable in specific areas.

In order to facilitate finding an expert in a particular field, the directory includes a subject index which has been cross-referenced to appropriate faculty members. Faculty can be referenced from the subject index by looking on the page number listed and then locating the designated letter next to the faculty member. If you are unsure about which academic area to look for your topic, consult the subject index for guidance.

The academic area listings provide photos, names, titles, phone numbers, and specialty areas for each faculty member. Faculty members who hold appointments in more than one department in the school are pictured in both areas. The names and titles of adjunct and emeritus faculty members are also listed.

Although this directory lists more than 100 subject listings, it is by no means complete. Topics have been summarized as succinctly as possible to conserve space, while still providing a clear understanding of the topic area. Research areas are constantly evolving to meet ever-changing public health concerns. The School may have also gained new faculty members with additional specialties since the date of publication. If you need assistance in any of these areas, contact the Office of Public Relations at (919) 966-0198.



*Photo by Dan Sears*

## Dean's Office



**Michel A. Ibrahim**

919-966-3215

Dean, School of Public Health  
Professor of Epidemiology  
Degrees: M.D., M.P.H., Ph.D.  
Specialties:  
**Health Policy**  
**Research Methods & Analysis**



**Richard M. House**

919-966-3309

Associate Dean for Public  
Health Practice  
Director of the Center for  
Public Health Practice  
Clinical Associate Professor of Health  
Behavior & Health Education  
Degrees: M.P.H., Ed.D.  
Specialties:  
**Continuing Education**  
**Public Health Practice**  
**Leadership**



**Ernest Schoenfeld**

919-966-3245

Associate Dean for Administration  
Lecturer of Health Policy &  
Administration  
Degrees: M.P.H., Dr.P.H.  
Specialties:  
**Laboratory Science**  
**Administration**



**Allan B. Steckler**

919-966-3904

Associate Dean for Academic Programs  
Professor of Health Behavior & Health  
Education  
Degrees: Dr.P.H.  
Specialties:  
**Community & School Health Promotion**  
**Programs Evaluation**  
**Qualitative Research Methods**  
**Community Health**  
**Health Policy Advocacy**



**William T. Small**

919-966-3524

Associate Dean for Students  
Degrees: M.S.P.H.  
Specialties:  
**Student & Minority Relations**



## External Affairs



**Barbara O. Chavious**

*919-966-0198*

Director of Alumni Affairs

Clinical Instructor of Health Policy  
& Administration

Degrees: M.P.H.

Specialties:

**Public Health Practice**

a



**April A. Hoyle**

*919-966-0198*

Assistant Director of Public Relations

Degrees: M.A.

Specialties:

**Public Relations**

**Internal Communication**

**Media Relations**

**Desktop Publishing**

**Mass Communication**

b



**Charles J. Rasberry, Jr.**

*919-966-0198*

Director of Development

Degrees: M.Div.

c

# Department of Biostatistics



**Barry H. Margolin** a

919-966-7251

Chair & Professor

Degrees: M.A., Ph.D.

Specialties:

**Data Analysis**  
**Experiment Design**  
**Statistical Genetics**  
**Biological Markers of Cancer**



**Lawrence L. Kupper** b

919-966-7260

Deputy Chair & Professor

Degrees: M.S., Ph.D.

Specialties:

**Regression Analysis**  
**Environmental Statistics**  
**Quantitative Epidemiology**



**Dana Quade** c

919-966-7255

Deputy Chair & Professor

Degrees: Ph.D.

Specialties:

**Data Analysis**  
**Nonparametrics**  
**Statistics**



**Shrikant I. Bangdiwala** d

919-962-3266

Research Associate Professor

Degrees: M.S., Ph.D.

Specialties:

**Sequential Methods**  
**Nonparametrics**  
**Clinical Trials**



**Richard E. Bilborrow** e

919-966-2157

Research Professor

Degrees: M.A., Ph.D.

Specialties:

**Demography**  
**Economic Development**



**Jianwen Cai** f

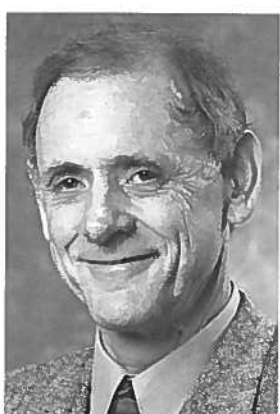
919-966-7788

Assistant Professor

Degrees: M.S., Ph.D.

Specialties:

**Survival Analysis**  
**Clinical Trials**  
**Correlated Responses**



**Lloyd Chambless** g

919-962-3264

Research Associate Professor

Degrees: Ph.D.

Specialties:

**Epidemiological Statistics**  
**Measurement Error**  
**Clinical Trials**



**Clarence E. Davis** h

919-962-2072

Professor

Degrees: M.S., Ph.D.

Specialties:

**Clinical Trials**  
**Nonparametrics**  
**Cardiovascular Epidemiology**

## Department of Biostatistics



**Lloyd J. Edwards** a  
 919-966-7265  
 Assistant Professor  
 Degrees: M.A., Ph.D.  
 Specialties:  
**Models**  
**Longitudinal Analysis**  
**Pulmonary Disease**



**John G. Fryer** b  
 919-966-7267  
 Research Professor  
 Degrees: Ph.D.  
 Specialties:  
**Clinical Trials**  
**Data Analysis**  
**Longitudinal Analysis**  
**Survival Analysis**



**Ronald W. Helms** c  
 919-966-7277  
 Professor  
 Degrees: M.A., Ph.D.  
 Specialties:  
**Linear Models**  
**Incomplete Data**  
**Longitudinal Analysis**  
**Clinical Trials**  
**Data Management**



**James D. Hosking** d  
 919-962-3085  
 Research Associate Professor  
 Degrees: M.A., Ph.D.  
 Specialties:  
**Data Management**  
**Multivariate Analysis**  
**Statistical Computation**  
**Clinical Trials**



**William D. Kalsbeek** e  
 919-962-3249  
 Associate Professor  
 Degrees: M.P.H., Ph.D.  
 Specialties:  
**Sample Design**  
**Survey Analysis**



**Alan Karr** f  
 919-962-1359  
 Professor  
 Degrees: M.S., Ph.D.  
 Specialties:  
**Stochastic Models**  
**Statistics**  
**Operations Research**



**Gary G. Koch** g  
 919-966-7282  
 Professor  
 Degrees: M.S., Ph.D.  
 Specialties:  
**Categorical Data Analysis**  
**Nonparametrics**  
**Multiplicity**



**Keith E. Muller** h  
 919-966-7272  
 Associate Professor  
 Degrees: M.A., M.S., Ph.D.  
 Specialties:  
**Linear Models**  
**Experiment Design**

# Department of Biostatistics



**Bahjat F. Qaqish** a  
 919-966-7271  
 Assistant Professor  
 Degrees: M.D., Ph.D.  
 Specialties:  
**Correlated Responses**  
**Survival Analysis**



**Françoise Seillier-Moiseiwitsch** b  
 919-966-7273  
 Assistant Professor  
 Degrees: M.Sc., Ph.D.  
 Specialties:  
**Predictive Inference**  
**Empirical Bayes Methodology**  
**Statistical Genetics**  
**HIV Evolution**  
**Bootstrap**



**Pranab K. Sen** c  
 919-966-7274  
 Carey C. Boshamer Professor  
 Degrees: M.S., Ph.D.  
 Specialties:  
**Multivariate Analysis**  
**Sequential Methods**  
**Nonparametrics**  
**Survival Analysis**



**Richard H. Shachtman** d  
 919-966-7250  
 Professor  
 Degrees: M.A., Ph.D.  
 Specialties:  
**Stochastic Models**  
**Decision Analysis**  
**Health Services Research**



**Paul W. Stewart** e  
 919-966-7276  
 Research Assistant Professor  
 Degrees: M.S., Ph.D.  
 Specialties:  
**Linear Models**  
**Nonlinear Statistical Models**  
**Distribution Theory**  
**Longitudinal Analysis**  
**Statistical Computation**



**Chirayath M. Suchindran** f  
 919-966-7258  
 Professor  
 Degrees: M.Sc., M.S.P.H.,  
 Ph.D.  
 Specialties:  
**Mathematical Demography**



**Michael J. Symons** g  
 919-966-7266  
 Professor  
 Degrees: M.P.H., Ph.D.  
 Specialties:  
**Statistical Applications**  
**Survival Analysis**



**Kinh N. Truong** h  
 919-966-7270  
 Associate Professor  
 Degrees: M.A., Ph.D.  
 Specialties:  
**Time Series**  
**Regression**  
**Bootstrap**  
**Nonparametrics**

## Department of Biostatistics



**Craig D. Turnbull** a

919-966-7259

Associate Professor

Degrees: M.P.H., Ph.D.

Specialties:

**Health Statistics  
Applied Research**

**James R.  
Abernathy** b

919-962-3263

Professor

Degrees: M.S.P.H., Ph.D.

Specialties:

**Cardiovascular Health &  
Disease  
Epidemiology**

### Adjuncts

**Ingrid A. Amara, M.S.P.H., Dr.P.H.**

Adjunct Assistant Professor

**Delton Atkinson, M.P.H.**

Adjunct Instructor

**Helen T. Bhattacharyya, M.S., Ph.D.**

Adjunct Associate Professor

**Kerrie E. Boyle, M.S., Dr.P.H.**

Adjunct Assistant Professor

**John P. Creason, M.S., Ph.D.**

Adjunct Associate Professor

**Deborah V. Dawson, Sc.M.**

Adjunct Assistant Professor

Adjunct Assistant Professor of Epidemiology

**David M. DeLong, M.A., Ph.D.**

Adjunct Associate Professor

**Elizabeth R. DeLong, M.A., Ph.D.**

Adjunct Assistant Professor

**Edward L. Frome, M.S., Ph.D.**

Adjunct Associate Professor

**Sandra B. Greene, M.S.P.H., Dr.P.H.**

Adjunct Associate Professor

**Harry A. Guess, M.S., Ph.D., M.D.**

Adjunct Professor

Adjunct Professor of Epidemiology

**Priscilla A. Guild, M.S.P.H.**

Adjunct Instructor

Adjunct Assistant Professor of Maternal & Child Health

**Kerry Brent Hafner, M.S., Ph.D.**

Adjunct Assistant Professor

**Frank E. Harrell, Jr., Ph.D.**

Adjunct Associate Professor

**David G. Hoel, Ph.D.**

Adjunct Professor

**Daniel G. Horvitz, Ph.D.**

Adjunct Professor

**Grace E. Kissling, Ph.D.**

Adjunct Associate Professor

**Lisa M. LaVange, M.A., Ph.D.**

Adjunct Assistant Professor

## Department of Biostatistics

**Kerry L. Lee, Ph.D.**

Adjunct Associate Professor

**Judith T. Lessler, M.A.T., Ph.D.**

Adjunct Associate Professor

**Anders S. Lunde, M.A., Ph.D.**

Adjunct Professor

**Imogene McCanless, M.A., Ph.D.**

Adjunct Assistant Professor

**Timothy M. Morgan, M.S., Ph.D.**

Adjunct Associate Professor

**Walter W. Piegorsch, M.S., Ph.D.**

Adjunct Associate Professor

**W. Kenneth Poole, M.P.H., Ph.D.**

Adjunct Professor

**Christopher J. Portier, M.S., Ph.D.**

Adjunct Associate Professor

**Donald W. Reinfurt, M.A., Ph.D.**

Adjunct Associate Professor

**Wilson B. Riggan, Ph.D.**

Adjunct Associate Professor

**Ibrahim A. Salama, M.S., Ph.D.**

Adjunct Professor

**Basil Samara, M.S., Ph.D.**

Adjunct Assistant Professor

**Babubhai V. Shah, M.Sc., Ph.D.**

Adjunct Professor

**Marjolein V. Smith, M.S., Ph.D.**

Adjunct Assistant Professor

**Steven M. Snapinn, M.S., Ph.D.**

Adjunct Associate Professor

**Dalene K. Stangl, M.A., M.S., Ph.D.**

Adjunct Assistant Professor

**Clarice R. Weinberg, M.A., Ph.D.**

Adjunct Associate Professor

**Takashi Yanagawa, M.Sc., Dr.Sc.**

Adjunct Associate Professor

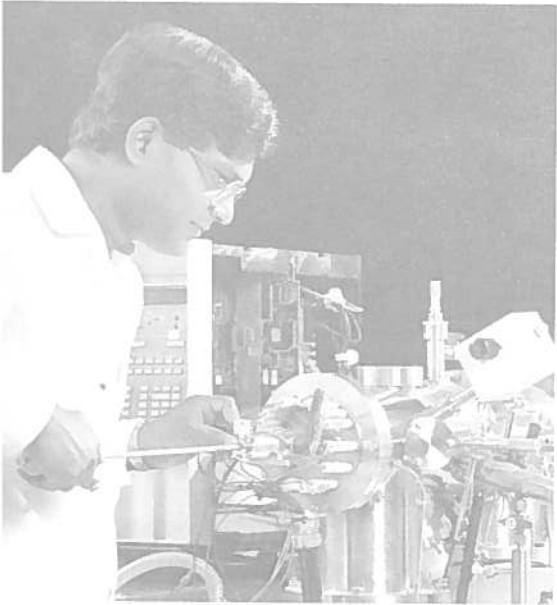
**Professors Emeriti**

**Elizabeth J. Coulter**

**Regina C. Elandt-Johnson**

**James E. Grizzle**

**H. Bradley Wells**



*Photo by Vic Cotto*

# Environmental Sciences & Engineering



**William H. Glaze** a

919-966-1024

Chair & Professor

Degrees: M.S., Ph.D.

Specialties:

**Formation of Disinfection  
By-Products  
Waste Treatment  
Environmental Chemistry  
Oxidation & Photochemical  
Processes for Water  
Treatment  
Environmental Analytical  
Chemistry**



**Donald L. Fox** b

919-966-3054

Associate Chair & Professor

Degrees: Ph.D.

Specialties:

**Atmospheric Chemistry**



**Michael D. Aitken** c

919-966-1481

Assistant Professor

Degrees: M.S.E., Ph.D.

Specialties:

**Wastewater Treatment  
Industrial Treatment  
Biotechnology**



**Deborah Amaral** d

919-966-6691

Assistant Professor

Degrees: M.S., Ph.D.

Specialties:

**Risk Management  
Decision Making**



**Richard N.L. Andrews** e

919-966-2359

Professor

Professor of Health Policy & Administration

Degrees: M.R.P., Ph.D.

Specialties:

**Environmental Policy  
Waste Reduction**



**Louise M. Ball** f

919-966-7306

Associate Professor

Degrees: Ph.D.

Specialties:

**Drug Metabolism  
Metabolic Activation of  
Xenobiotics**



**George Christakos** g

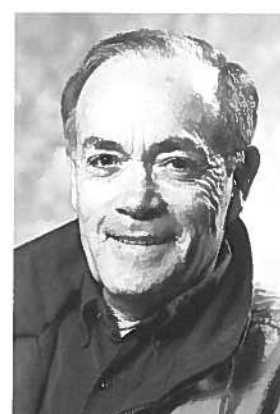
919-966-1767

Assistant Professor

Degrees: M.A., M.S., Ph.D.

Specialties:

**Stochastic Models  
Hydrology  
Subsurface Fluid Flow  
Environmental Engineering**



**Russell F. Christman** h

919-966-1683

Professor

Degrees: Ph.D.

Specialties:

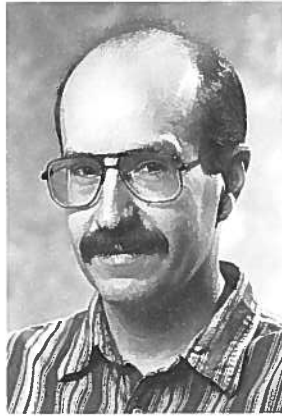
**Disinfection By-Products  
Formation & Control  
Aquatic Chemistry  
Characterization of Aquatic  
Natural Organic Material**



# Environmental Sciences & Engineering



**Francis A. DiGiano** a  
 919-966-2480  
 Professor of Water Resources & Engineering  
 Degrees: Ph.D.  
 Specialties:  
**Water Treatment**  
**Wastewater Treatment**  
**Mass Transport Models**



**Michael R. Flynn** b  
 919-966-3473  
 Associate Professor  
 Degrees: Sc.D.  
 Specialties:  
**Industrial Hygiene**



**Donald E. Francisco** c  
 919-966-5631  
 Lecturer  
 Degrees: Ph.D.  
 Specialties:  
**Aquatic Biology**  
**Wastewater Biology**  
**Microbial Ecology**  
**Water Treatment**  
**Wastewater Treatment**



**Paul T. Imhoff** d  
 919-966-7892  
 Research Assistant Professor  
 Degrees: M.A., M.S., Ph.D.  
 Specialties:  
**Environmental Engineering**  
**Water Pollution**  
**Groundwater Contamination**



**Richard M. Kamens** e  
 919 966 5452  
 Research Professor  
 Degrees: M.S.P.H.  
 Specialties:  
**Aerosols**  
**Atmospheric Chemistry**



**Donald T. Lauria** f  
 919-966 7644  
 Professor  
 Degrees: M.S.S.E., Ph.D.  
 Specialties:  
**Water Systems Analysis**  
**Wastewater Systems**  
**Analysis**  
**International Water**  
**Resources**



**David H. Leith** g  
 919 966-3851  
 Professor  
 Degrees: M.S., Sc.D.  
 Specialties:  
**Air Pollution Engineering**  
**Pollution Prevention**  
**Industrial Air Pollutants**  
**Aerosol Formation & Measurement**



**Frances M. Lynn** h  
 919-966 3335  
 Research Associate Professor  
 Director of Environmental Resource Program  
 Degrees: Dr.P.H.  
 Specialties:  
**Environmental Decision Making**

# Environmental Sciences & Engineering



**Stephen R. McDow** a  
 919-966-1373  
 Research Assistant Professor  
 Degrees: Ph.D.  
 Specialties:  
**Atmospheric Chemistry**



**Cass T. Miller** b  
 919-966-2643  
 Associate Professor  
 Degrees: M.S.C.E.,  
 M.S.E.E., Ph.D.  
 Specialties:  
**Fluid Flow & Contamination  
 Transport**



**Frederic K. Pfaender** c  
 919-966-3842  
 Professor of Environmental  
 Microbiology  
 Director of the Institute for  
 Environmental Studies  
 Degrees: Ph.D.  
 Specialties:  
**Microbial Ecology  
 Biological Waste Treatment  
 Soil Bioremediation**



**Parker C. Reist** d  
 919-966-7305  
 Professor of Air & Industrial  
 Hygiene Engineering  
 Degrees: S.M., S.M., Sc.D.  
 Specialties:  
**Aerosol Formation &  
 Measurement  
 Industrial Hygiene**



**Ramiah Sangaiah** e  
 919-966-7325  
 Research Assistant Professor  
 Degrees: Ph.D.  
 Specialties:  
**Chemistry**



**Y.S. Carol Shieh** f  
 919-966-3826  
 Research Assistant Professor  
 Degrees: Ph.D.  
 Specialties:  
**Waterborne Viruses  
 RNA-Related Viruses  
 Environmental Virology**



**Philip C. Singer** g  
 919-966-3865  
 Professor  
 Degrees: Ph.D.  
 Specialties:  
**Water Treatment  
 Wastewater Treatment  
 Water Chemistry  
 Disinfection By-Products**



**James A. Swenberg** h  
 919-966-6139  
 Professor  
 Degrees: D.V.M., Ph.D.  
 Specialties:  
**Carcinogenesis  
 DNA Adducts  
 Biological Markers  
 Toxicology  
 Risk Assessment**

# Environmental Sciences & Engineering



**Lori A. Todd** a

919-966-7302

Assistant Professor

Degrees: Ph.D.

Specialties:

**Atmospheric Chemistry  
Pollution Control Systems  
Occupational Health  
Occupational Epidemiology**



**Alvis G. Turner, Jr.** b

919-966-3850

Professor

Degrees: Ph.D.

Specialties:

**Risk Assessment**



**James E. Watson, Jr.** c

919-966-3840

Professor of Radiological Hygiene

Degrees: M.S., Ph.D.

Specialties:

**Radiation**

**M. Judith Charles** d

919-966-3857

Research Associate Professor

Degrees: Ph.D.

Specialties:

**Radiation Biophysics  
Environmental Analytical  
Chemistry  
Mass Spectrometry**

**Douglas J. Crawford-Brown** e

919-966-6026

Associate Professor

Degrees: M.S., Ph.D.

Specialties:

**Radiation Biophysics  
Mathematical Modeling of  
Carcinogenesis  
Risk Analysis**

**Avram Gold** f

919-966-7304

Professor

Degrees: M.S., Ph.D.

**Harvey E. Jeffries** g

919-966-7312

Professor of Air Hygiene

Degrees: M.S.P.H., Ph.D.

Specialties:

**Urban Air Pollution  
Atmospheric Chemistry/  
Modeling**

**Stephen M. Rappaport** h

919-966-5001 / 962-2101

Professor

Degrees: M.S.P.H., Ph.D.

Specialties:

**Occupational Health & Safety  
Exposure Assessment  
Epidemiology**

**Mark D. Sobsey** i

919-966-7303

Professor

Degrees: M.S., Ph.D.

Specialties:

**Biotechnology  
Shellfish Sanitation  
Microbiological Risk  
Assessment  
Infectious Diarrhea  
Virology**

**Stephen C. Whalen** j

919-966-9895

Assistant Professor

Degrees: M.S., Ph.D.

Specialties:

**Ecology  
Limnology  
Global Climate Change**

**Dale Whittington** k

919-966-1821

Professor

Degrees: M.P.A., M.Sc., Ph.D.

Specialties:

**Water Resources Economics  
International Development**

**Donald G. Willhoit** l

919-962-5507

Associate Professor

Degrees: M.S., Sc.D.

Specialties:

**Occupational Health & Safety**

# Environmental Sciences & Engineering

## Adjuncts

**Phillip W. Albro, Ph.D.**

Adjunct Associate Professor

**Michael A. Berry, M.S., Ph.D.**

Adjunct Associate Professor

**Linda S. Birnbaum, M.S., Ph.D.**

Adjunct Professor

**John Briscoe, M.S., Ph.D.**

Adjunct Associate Professor

**Larry D. Claxton, M.S., Ph.D.**

Adjunct Associate Professor

**David M. DeMarini, M.S., Ph.D.**

Adjunct Associate Professor

**John M. Dement, M.S., Ph.D.**

Adjunct Associate Professor

**Merril Eisenbud, Sc.D., D.H.C.**

Adjunct Professor

**David S. Ensor, M.S., Ph.D.**

Adjunct Professor

**Raymond Hackney, M.S.P.H., Ph.D.**

Adjunct Lecturer

**Philip E. Hamrick, M.S., Ph.D.**

Adjunct Associate Professor

**J. Ronald Hass, Ph.D.**

Adjunct Associate Professor

**John L.S. Hickey, M.S.S.E., M.S.P.H., Ph.D.**

Adjunct Associate Professor of Air & Industrial Hygiene  
Research Associate Professor Emeritus

**Linda W. Little, M.S.P.H., Ph.D.**

Adjunct Associate Professor

**Richard A. Luettich, Jr., M.S., Sc.D.**

Adjunct Associate Professor

**Michael Madden, M.S., M.S., Ph.D.**

Adjunct Assistant Professor

**Dennis F. Naugle, M.S., Ph.D.**

Adjunct Assistant Professor

**Daniel L. Norwood, M.S.P.H., Ph.D.**

Adjunct Assistant Professor

**Hans W. Paerl, Ph.D.**

Adjunct Professor

**Joseph Pinto, Ph.D.**

Adjunct Associate Professor

**Jane Ellen Simmons, M.S.P.H., Ph.D.**

Adjunct Assistant Professor

**Thomas N. Starr, M.S., Ph.D.**

Adjunct Assistant Professor

**Woodhall Stopford, B.M.S., M.S.P.H.**

Adjunct Assistant Professor

**Donald A. Tyndall, M.S.P.H., D.D.S.**

Adjunct Associate Professor

**Barbara T. Walton, Ph.D.**

Adjunct Professor

**David B. Washburn, Ph.D.**

Adjunct Assistant Professor

**Russell W. Wiener, M.S., Ph.D.**

Adjunct Assistant Professor

**Bobby M. Wilson, M.Envr.Sc.**

Adjunct Instructor

**William E. Wilson, Ph.D.**

Adjunct Professor

## Professors Emeriti

**Emil T. Chanlett**

**Robert L. Harris, Jr.**

**David H. Howells**

**Maynard M. Hufschmidt**

**J. Donald Johnson**

**Edward J. Kuenzler**

**Morris A. Shiffman**

**Mark S. Shuman**

**Charles M. Weiss**

## Lecturer Emeritus

**Ted Moore Williams**



*Photo by Vic Cotto*

## Department of Epidemiology



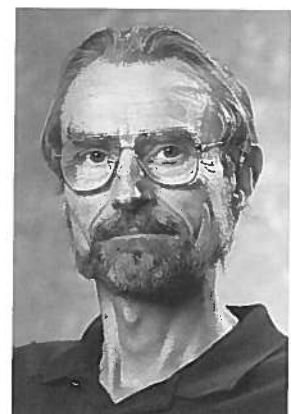
**Carl M. Shy** a  
 919-966-7448  
 Chair & Professor  
 Degrees: M.D., M.P.H.,  
 Dr.P.H.  
 Specialties:  
**Air Pollution**  
**Environmental Epidemiology**  
**Occupational Epidemiology**  
**Respiratory Illnesses**



**Ralph S. Baric** b  
 919-966-3895  
 Associate Professor  
 Degrees: Ph.D.  
 Specialties:  
**RNA-Related Viruses**  
**Viral Diseases**  
**Drug Resistance in Malaria**



**Hilton T. Goulson** c  
 919-966-3524  
 Professor  
 Degrees: M.S.P.H., Ph.D.  
 Specialties:  
**Parasites**  
**Laboratory Science**



**Gerardo Heiss** d  
 919-966-7421  
 Professor  
 Degrees: M.D., Ph.D.  
 Specialties:  
**Cardiovascular Health &  
 Disease Epidemiology**  
**Community Surveillance**  
**Genetics**  
**Minority Health**  
**Lipids**



**Irva Hertz-  
 Picciotto** e  
 919-966-7445  
 Assistant Professor  
 Degrees: M.A., M.P.H., Ph.D.  
 Specialties:  
**Environmental Epidemiology**  
**Data Analysis, Survival**  
**Analysis & Logistical**  
**Regression**  
**Epidemiologic Methods**  
**Pregnancy**  
**Reproductive Epidemiology**



**Barbara S. Hulka** f  
 919-966-7412  
 Kenan Professor  
 Degrees: M.D., M.P.H.  
 Specialties:  
**Uterine Cancer**  
**Prostate Cancer**  
**Breast Cancer**  
**Cancer Epidemiology**  
**Biological Markers of Cancer**



**Michel A. Ibrahim** g  
 919-966-3215  
 Professor  
 Dean, School of Public Health  
 Degrees: M.D., M.P.H.,  
 Ph.D.  
 Specialties:  
**Health Policy**  
**Research Methods & Analysis**



**Berton H. Kaplan** h  
 919-966-7414  
 Professor  
 Degrees: Ph.D.  
 Specialties:  
**Psychosocial Aspects of**  
**Cardiovascular Health &  
 Disease**  
**Psychosocial Aspects of**  
**Chronic Conditions &  
 Diseases**

## Department of Epidemiology



**Lenore Kohlmeier a**

919-966-7450/ 966-7236

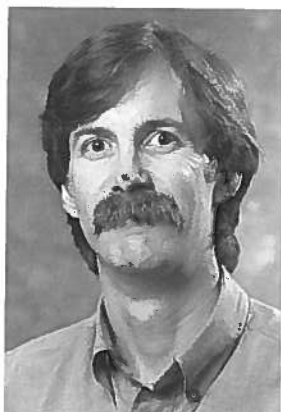
Professor

Professor of Nutrition

Degrees: M.Sc., Ph.D.

Specialties:

**Dietary Assessment  
Antioxidants  
Cancer Epidemiology  
Nutritional Epidemiology**



**Dana P. Loomis b**

919-966-7433

Assistant Professor

Degrees: M.S.P.H., Ph.D.

Specialties:

**Occupational Injuries  
Occupational Hazards  
Air Pollution  
Exposure Assessment**



**Robert Craft Millikan c**

919-966-7437

Assistant Professor

Degrees: D.V.M., M.P.H.,  
Ph.D.

Specialties:

**Breast Cancer  
Colon Cancer  
Genetic Epidemiology  
Infectious Disease  
Epidemiology  
Molecular Biology**



**Beth M. Newman d**

919-966-7435

Assistant Professor

Degrees: M.S., Ph.D.

Specialties:

**Breast Cancer  
Cancer Epidemiology  
Cardiovascular Disease  
Genetic Epidemiology  
Women's Health**



**Andrew F. Olshan e**

919-966-7424

Assistant Professor

Degrees: Ph.D.

Specialties:

**Occupational Epidemiology  
Genetic Epidemiology  
Birth Defects  
Head & Neck Cancer  
Pediatric Cancer**



**Wayne D. Rosamond f**

919-966-7419

Assistant Professor

Degrees: M.S., Ph.D.

Specialties:

**Cardiovascular Disease  
Epidemiology  
Cardiovascular Disease  
Medical Care  
Arteries  
Community Surveillance &  
Cardiovascular Disease  
Chronic Disease Epidemiology**



**Rachel A. Royce g**

919-966-7440

Assistant Professor

Degrees: M.P.H., Ph.D.

Specialties:

**AIDS & Gender  
AIDS & Tobacco  
AIDS & Drug Use  
AIDS & Infectious Diseases**



**David A. Savitz h**

919-966-7427

Professor

Director of the Occupational  
& Environmental Health  
Studies Program

Degrees: Ph.D.

Specialties:

**Electromagnetic Fields  
Occupational Epidemiology  
Cancer  
Reproductive Epidemiology  
Environmental Epidemiology**

## Department of Epidemiology



**Victor J. Schoenbach** a  
 919-966-7436  
 Associate Professor  
 Degrees: M.Sc., M.S.P.H., Ph.D.  
 Specialties:  
**Sexually Transmitted Diseases**  
**Smoking**  
**Minority Health**  
**Lifestyles**  
**HIV**



**John R. Seed** b  
 919-966-3527  
 Professor  
 Degrees: Ph.D.  
 Specialties:  
**Parasites**  
**Biochemistry**  
**Microbial Ecology**  
**Tropical Diseases**  
**Protozoa**



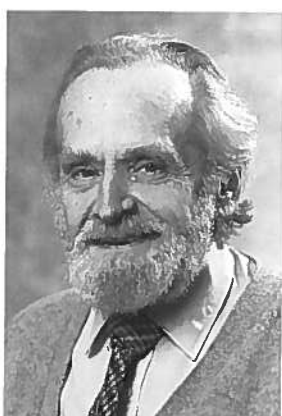
**Lola V. Stamm** c  
 919-966-3882  
 Associate Professor  
 Degrees: Ph.D.  
 Specialties:  
**Syphilis**  
**Lyme Disease**  
**Metabolism**  
**Bacterial Pathogens**  
**Infectious Diseases**



**June Stevens** d  
 919-962-2756/ 966-1065  
 Associate Professor  
 Associate Professor of Nutrition  
 Degrees: M.S., Ph.D.  
 Specialties:  
**Cardiovascular Health & Disease Epidemiology**  
**Nutritional Epidemiology**  
**Dietary Fiber**  
**Obesity**



**James C. Thomas** e  
 919-966-7434  
 Assistant Professor  
 Degrees: M.P.H., Ph.D.  
 Specialties:  
**Sexually Transmitted Diseases**  
**International Health**  
**Quantitative Methods**  
**Qualitative Methods**



**Herman A. Tyroler** f  
 919-966-7426  
 Alumni Distinguished Professor  
 Degrees: M.D.  
 Specialties:  
**Cardiovascular Disease in Women**  
**Cardiovascular Disease in Minorities**  
**Community Surveillance & Cardiovascular Disease**  
**International Aspects of Cardiovascular Disease**  
**Cardiovascular Disease Genetics**



**Marilyn F. Vine** g  
 919-966-7451  
 Assistant Professor  
 Degrees: M.P.H., Ph.D.  
 Specialties:  
**Lung Cancer Epidemiology**  
**Biological Markers of Cancer**



**Kristen A. Weigle** h  
 919-966-7439  
 Assistant Professor  
 Degrees: M.D.  
 Specialties:  
**Diarrhea in Daycare**  
**Respiratory Illness in Children**  
**Immunizations**  
**Tropical Diseases**  
**Parasites**



## Department of Epidemiology



**Steven B. Wing** a

919-966-7416

Assistant Professor

Degrees: Ph.D.

Specialties:

**Social Inequalities in Health  
Radiation  
Environmental Epidemiology  
Occupational Epidemiology**

**Kathleen Conway** b

919-966-2180/ 966-6437

Research Assistant Professor

Degrees: Ph.D.

Specialties:

**Breast Cancer  
Carcinogenesis  
Cancer Cell Biology  
Cancer Genetics  
Head & Neck Cancer**

**Lester W. Lee** d

919-966-3594

Research Assistant Professor

Degrees: M.S., M.P.H.,  
Ph.D.

Specialties:

**Environmental Epidemiology  
Toxicology  
Laboratory Technology**

**James E. Hall** c

919-966-7441

Associate Professor

Degrees: M.S., Ph.D.

Specialties:

**Biochemical Interactions  
of Viruses  
Pneumonia  
Drug Metabolism**

**Jennifer Mary  
Ratcliffe** e

919-966-3889

Research Associate Professor

Degrees: M.Sc., Ph.D.

Specialties:

**Environmental Epidemiology**

### Adjuncts

**Timothy E. Aldrich, M.P.H., Ph.D.**

Adjunct Assistant Professor

**Naomar Almeida-Filho, M.P.H., M.D., Ph.D.**

Adjunct Associate Professor

**Dragana A. Andjelkovich, M.P.H., M.D.**

Adjunct Associate Professor

**Elizabeth B. Andrews, M.P.H., Ph.D.**

Adjunct Assistant Professor

**Henry Michael Arrighi, M.S.P.H., Ph.D.**

Adjunct Assistant Professor

**Donna D. Baird, M.P.H., Ph.D.**

Adjunct Assistant Professor

**John C. Barefoot, M.A., Ph.D.**

Adjunct Associate Professor

**James C. Barrett, Ph.D.**

Adjunct Professor

**James D. Beck, M.S., Ph.D.**

Adjunct Professor

**Richard A. Berzon, M.A., Dr.P.H.**

Adjunct Assistant Professor

**Dan German Blazer, M.P.H., M.D., Ph.D.**

Adjunct Professor

**W. Eugene Broadhead, M.P.H., M.D., Ph.D.**

Adjunct Assistant Professor

**J. Trig Brown, M.P.H., M.D.**

Adjunct Assistant Professor

**Dennis A. Clements, III, M.D., Ph.D.**

Adjunct Assistant Professor

**Thomas B. Cole, M.P.H., M.D.**

Adjunct Assistant Professor

**Joan Cornoni-Huntley, M.P.H., Ph.D.**

Adjunct Professor

**John R. Crouse, M.D.**

Adjunct Associate Professor

**Frank V. Crout, M.S., M.B.A., Ph.D.**

Adjunct Assistant Professor

**Deborah Dawson, Sc.M., Ph.D.**

Adjunct Assistant Professor

Adjunct Assistant Professor of Biostatistics

## Department of Epidemiology

**Richard B. Everson, M.P.H., M.D.**  
Adjunct Professor

**Robert H. Fletcher, M.Sc., M.D.**  
Adjunct Professor

**Suzanne W. Fletcher, M.Sc., M.D.**  
Adjunct Professor

**Judith A. Fortney, M.S., Ph.D.**  
Adjunct Professor

**Jean G. French, M.A., M.P.H., Dr.Ph.**  
Adjunct Professor

**Joanne M. Garrett, M.S.P.H., Ph.D.**  
Adjunct Assistant Professor

**Peter A. Garrett, M.D., Ph.D.**  
Adjunct Assistant Professor

**Raymond S. Greenberg, M.P.H., M.D., Ph.D.**  
Adjunct Professor

**Jack D. Griffith, M.S., Ph.D.**  
Adjunct Professor

**Harry A. Guess, M.S., Ph.D., M.D.**  
Adjunct Professor  
Adjunct Professor of Biostatistics

**Russell P. Harris, M.P.H., M.D.**  
Adjunct Assistant Professor

**Carl G. Hayes, M.P.H., Ph.D.**  
Adjunct Professor

**Siegfried H. Heyden, M.D., Ph.D.**  
Adjunct Professor

**Michael D. Hogan, M.S., M.P.H., Ph.D.**  
Adjunct Associate Professor

**Nancy S. Hunter, M.P.H., Dr.P.H.**  
Adjunct Assistant Professor

**Debra E. Irwin, M.S.P.H., Ph.D.**  
Adjunct Associate Professor

**Sherman A. James, Ph.D.**  
Adjunct Professor

**Eric S. Johnson, D.T.P.H., M.P.H., Ph.D.**  
Adjunct Assistant Professor

**Ulrich Keil, M.P.H., M.D., Ph.D.**  
Adjunct Professor

**Eugene J. Lengerich, M.S., V.M.D.**  
Adjunct Assistant Professor

**Ruth E. Little, M.A., M.S., Sc.D.**  
Adjunct Professor

**J. Newton MacCormack, M.P.H., M.D.**  
Adjunct Professor

**Peter A. Margolis, M.D., Ph.D.**  
Adjunct Assistant Professor

**Margaret F. McCann, M.S., Ph.D.**  
Adjunct Assistant Professor

**William F. McDonnell, III, M.D., Ph.D.**  
Adjunct Associate Professor

**Melinda S. Meade, M.A., Ph.D.**  
Adjunct Professor

**Wilbur K. Milhous, M.S., Ph.D.**  
Adjunct Associate Professor

**Dexter L. Morris, Ph.D., M.D.**  
Adjunct Assistant Professor

**Azmi Adel Nabulsi, M.B., M.P.H.**  
Adjunct Assistant Professor

**George R. Parkerson, Jr., M.P.H., M.D.**  
Adjunct Professor

**Miquel S. Porta, M.P.H., M.D., Ph.D.**  
Adjunct Associate Professor

**Walter J. Rogan, M.P.H., M.D.**  
Adjunct Associate Professor

**Michael J. Rosenberg, M.P.H., M.D.**  
Adjunct Associate Professor

**Carol W. Runyan, M.P.H., Ph.D.**  
Adjunct Associate Professor  
Director of the Injury Prevention Research Center  
Associate Professor of Health Behavior & Health Education

**Gregory P. Samsa, M.S., Ph.D.**  
Adjunct Assistant Professor

**Dale Sandler, M.P.H., Ph.D.**  
Adjunct Associate Professor

**Joellen M. Schildkraut, M.P.H., Ph.D.**  
Adjunct Assistant Professor

**Hene C. Siegler, M.P.H., Ph.D.**  
Adjunct Associate Professor

## Department of Epidemiology

**C. Gregory Smith, M.P.H., M.D.**

Adjunct Assistant Professor

**David C. Sokal, M.D.**

Adjunct Assistant Professor

**John W. Stamm, D.D.S., D.D.P.H., M.Sc.D.**

Adjunct Professor

**Paul E. Stang, M.S., P.A., Ph.D.**

Adjunct Assistant Professor

**David S. Strogatz, M.S.P.H., Ph.D.**

Adjunct Associate Professor

**Patricia S. Tennis, M.P.H., M.S., Ph.D.**

Adjunct Assistant Professor

**Hugh H. Tilson, M.P.H., M.D., Dr.P.H.**

Adjunct Professor

Adjunct Professor of Health Policy & Administration

**James F. Toole, L.L.B., M.D.**

Adjunct Professor

**Christine A. Uhlinger, V.M.D., M.P.H.**

Adjunct Assistant Professor

**Hetty A. Waskin, M.S.P.H., M.D.**

Adjunct Assistant Professor

**Jane A. Weintraub, M.P.H., D.D.S.**

Adjunct Associate Professor

Associate Professor of Health Policy & Administration

**Alice D. White, M.S.P.H., Ph.D.**

Adjunct Assistant Professor

**Allen J. Wilcox, M.P.H., M.D., Ph.D.**

Adjunct Professor

**Redford B. Williams, M.D.**

Adjunct Professor

**Bonnie C. Yankaskas, M.P.H., Ph.D.**

Adjunct Assistant Professor

**Professor Emeritus**

**Cecil G. Sheps**

**Associate Professor Emeritus**

**M. Caroline Becker**

# Health Behavior & Health Education



**James R. Sorenson** a  
 919-966-3761  
 Chair & Professor  
 Degrees: M.A., Ph.D.  
 Specialties:  
**Health Education**  
**Health Promotion**  
**Interventions**  
**Human Genetics**  
**Ethics**  
**Theory**



**Brenda M. DeVellis** b  
 919-966-3908  
 Associate Chair & Professor  
 Degrees: M.A., Ph.D.  
 Specialties:  
**Social Psychological Aspects of**  
**Health Behavior**  
**Coping with Chronic Disease**  
**Cancer Screening**  
**Parental Beliefs about Child**  
**Health**  
**Women's Health**



**Karl E. Bauman** c  
 919-966-3900  
 Professor  
 Degrees: M.A., Ph.D.  
 Specialties:  
**Health Behavior Determinants**  
**Adolescent Health**  
**Health Promotion**



**Leonard H. Dawson, III** d  
 919-966-3902  
 Clinical Professor  
 Special Assistant to the Dean  
 for International Activities  
 Degrees: M.S.P.H.  
 Specialties:  
**Adolescent Pregnancy**  
**Prevention**  
**Health Policy**  
**International Health**  
**Community Health**



**Robert F. DeVellis** e  
 919-966-7534  
 Research Associate Professor  
 Degrees: M.A., Ph.D.  
 Specialties:  
**Adaptation to Illness**  
**Adaptation to Arthritis**  
**Parental Beliefs about Child**  
**Health**  
**Social Comparison in**  
**Chronic Conditions**  
**Psychometrics**



**JoAnne L. Earp** f  
 919-966-3903  
 Professor  
 Degrees: Sc.D.  
 Specialties:  
**Social Psychological**  
**Aspects of Health Behavior**  
**Women's Health**  
**Cancer Prevention & Control**  
**Sexually Transmitted Diseases**  
**AIDS / HIV**



**Eugenia Eng** g  
 919-966-3909  
 Associate Professor  
 Degrees: M.P.H., Ph.D.  
 Specialties:  
**Community Interventions**  
**International Health**  
**Social Issues in Public Health**  
**Cancer Prevention & Control**  
**Qualitative Research**



**Vangie A. Foshee** h  
 919-966-6616  
 Assistant Professor  
 Assistant Professor of Public  
 Health Nursing  
 Degrees: M.Ed., Ph.D.  
 Specialties:  
**Adolescent Smoking**  
**Adolescent Drug Use**  
**Adolescent Violence &**  
**Violence Prevention**  
**Adolescent Sexual Behavior**  
**Dating Violence**

# Health Behavior & Health Education



**John W. Hatch** a  
 919-966-3906  
 Kenan Professor  
 Degrees: M.S.W., Dr.P.H.  
 Specialties:  
**Health Promotion in Churches**  
**Minority Health**  
**Community Health Outreach**  
**Programs**  
**Rural Health & Development**



**Sandra W. Headen** b  
 919 966 3914  
 Research Assistant Professor  
 Degrees: M.A., Ph.D.  
 Specialties:  
**Cancer Prevention & Control**  
**Smoking Cessation**  
**Adolescent Health**  
**Psychosocial Aspects of**  
**Chronic Disease**  
**Minority Health**



**Richard M. House** c  
 919 966 3309  
 Clinical Associate Professor  
 Associate Dean for Public  
 Health Practice  
 Director of the Center for  
 Public Health Practice  
 Degrees: M.P.H., Ed.D.  
 Specialties:  
**Continuing Education**  
**Public Health Practice**  
**Leadership**



**Christine Jackson** d  
 919-966-7546  
 Assistant Professor  
 Degrees: M.A., Ph.D.  
 Specialties:  
**Community Health Promotion**  
**Programs**  
**Child Health Promotion**  
**Adolescent Health Promotion**



**Ethel Jackson** e  
 919-966-3910  
 Clinical Instructor  
 Degrees: M.P.H.  
 Specialties:  
**Community Health Education**



**Elizabeth Mutran** f  
 919-966 3913  
 Associate Professor  
 Degrees: M.A., Ph.D.  
 Specialties:  
**Aging & Human Development**  
**Care & Functioning of the**  
**Elderly**  
**Long-Term Care**



**Carol Runyan** g  
 919 966 3916/ 966 2251  
 Associate Professor  
 Director of the Injury  
 Prevention Research Center  
 Adjunct Associate Professor of  
 Epidemiology  
 Degrees: M.P.H., Ph.D.  
 Specialties:  
**Injury & Injury Prevention**  
**Violence & Violence**  
**Prevention**



**Allan B. Steckler** h  
 919-966-3904  
 Professor  
 Associate Dean for Academic  
 Programs  
 Degrees: Dr.P.H.  
 Specialties:  
**Community & School Health**  
**Promotion Programs**  
**Evaluation**  
**Qualitative Research Methods**  
**Community Health**  
**Health Policy Advocacy**

# Health Behavior & Health Education



**Victor J. Strecher**

919-966-3917

Associate Professor

Degrees: M.P.H., Ph.D.

Specialties:

**Smoking Cessation  
Health Behavior Interventions  
Multi-Media Education  
Health Promotion  
Interventions**

## **Adjuncts**

**Barbara T. Baylor, M.P.H.**

Adjunct Instructor

**Susan Blalock, M.P.H., Ph.D.**

Adjunct Assistant Professor

**Lynn W. Blanchard, M.P.H., Ph.D.**

Adjunct Assistant Professor

**Mary Bobbitt-Cooke, M.P.H.**

Adjunct Instructor

**James M. Bowling, M.A.**

Adjunct Instructor

**Mary M. Cooper, M.P.H.**

Adjunct Instructor

**Denise M. Dickinson, M.P.H.**

Adjunct Instructor

**William W. Dow, M.D.**

Adjunct Assistant Professor

**Susan T. Ennett, M.S.P.H., Ph.D.**

Adjunct Assistant Professor

**Tekola Fisseha, M.P.H.**

Adjunct Instructor

**Robert L. Flewelling, M.S., Ph.D.**

Adjunct Assistant Professor

**Robert R. Frye, M.P.H.**

Adjunct Instructor

**Janet Heath, M.A.**

Adjunct Instructor

**Deborah Hilgenberg, M.P.H.**

Adjunct Assistant Professor

**Anita Page Holmes, M.P.H., J.D.**

Adjunct Assistant Professor

**Vanessa F. Jeffries, M.Ed.**

Adjunct Assistant Professor

**David Jolly, M.Ed., M.S.P.H.**

Adjunct Assistant Professor

**Belinda L. Jones, M.P.H.**

Adjunct Instructor

**Dennis R. Joyner, M.P.H.**

Adjunct Instructor

# Health Behavior & Health Education

**Kathryn J. Kerr, M.P.H.**

Adjunct Instructor

**John C. Key, M.S.P.H., M.S.W., Ph.D.**

Adjunct Assistant Professor

**Amin Khalil, M.S., M.P.H.**

Adjunct Assistant Professor

**Kathryn D. Kramer, M.S., Ph.D.**

Adjunct Assistant Professor

**Holly Martin, M.Ed.**

Adjunct Instructor

**Laura K. McCormick, M.S.P.H.**

Adjunct Assistant Professor

**David McCoy, M.Ed., M.P.H., J.D.**

Adjunct Assistant Professor

**Kenneth R. McLeroy, M.S., Ph.D.**

Adjunct Associate Professor

**Karen Monaco, M.S.**

Adjunct Instructor

**Charles Morrison, M.P.H., Ph.D.**

Adjunct Assistant Professor

**Regina Y. Petteway, M.S.P.H.**

Adjunct Instructor

**Elisa M. Rapaport, M.P.H.**

Adjunct Instructor

**Dennis W. Retzlaff, M.Div.**

Adjunct Instructor

**Barbara K. Rimer, Dr.P.H.**

Adjunct Associate Professor

Adjunct Associate Professor of Public Health Nursing

**Christopher Ringwalt, M.S.S.W., Dr.P.H.**

Adjunct Assistant Professor

**Anna P. Schenck, M.S.P.H.**

Adjunct Instructor

**Connie Service, M.P.H.**

Adjunct Instructor

**Miriam Bachar Settle, M.S.**

Adjunct Assistant Professor

**Donna Spoon, B.S.P.H.**

Adjunct Instructor

**Irene Tessaro, M.A., M.S.N., Dr.P.H.**

Adjunct Assistant Professor

Adjunct Assistant Professor of Public Health Nursing

**Emily T. Tyler, M.P.H.**

Adjunct Instructor

**Jane K. Vella, M.A., Ed.D.**

Adjunct Assistant Professor

**Yvonne M. Wasilewski, M.A., M.Phil., Ph.D.**

Adjunct Assistant Professor

**Karen M. Webb, M.Ed.**

Adjunct Instructor

**Lynn E. Williams, B.S.P.H.**

Adjunct Instructor

**Professors Emeriti**

**Ralph H. Boatman, Jr.**

**Charles L. Harper**

**Godfrey M. Hochbaum**

**Lucy S. Morgan**

**Eunice N. Tyler**

**Clinical Professor Emeritus**

**Howard Barnhill**

**Clinical Associate Professor Emeritus**

**Harriet H. Barr**