



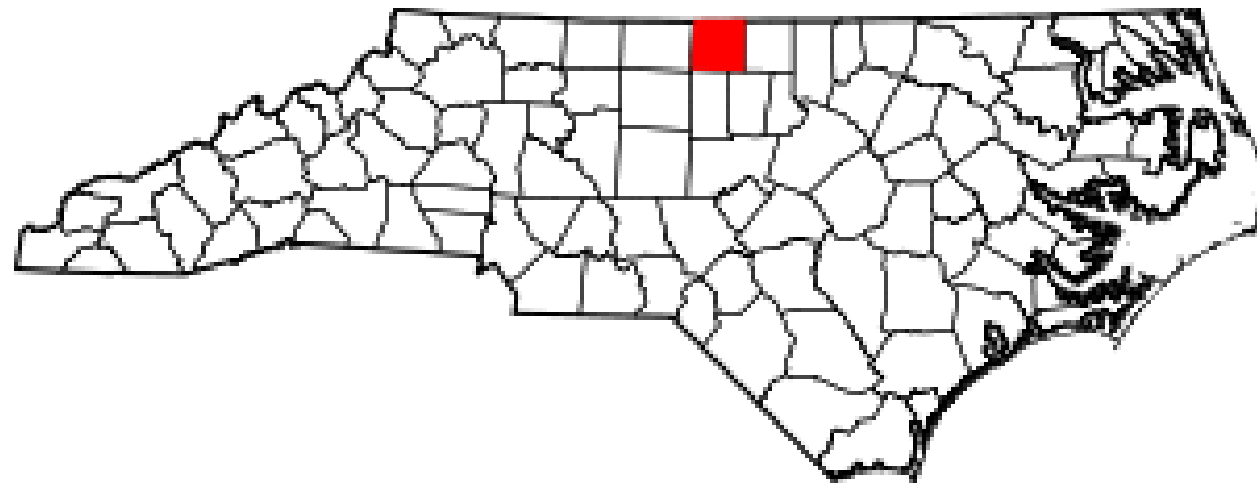
Assessing Rural Community Health, Environment, and Cumulative Impacts due to a Proposed Asphalt Plant in the Anderson Community

Presented by Reverend Bryon Shoffner, Ms. Anita Foust, & Lindsay Savelli

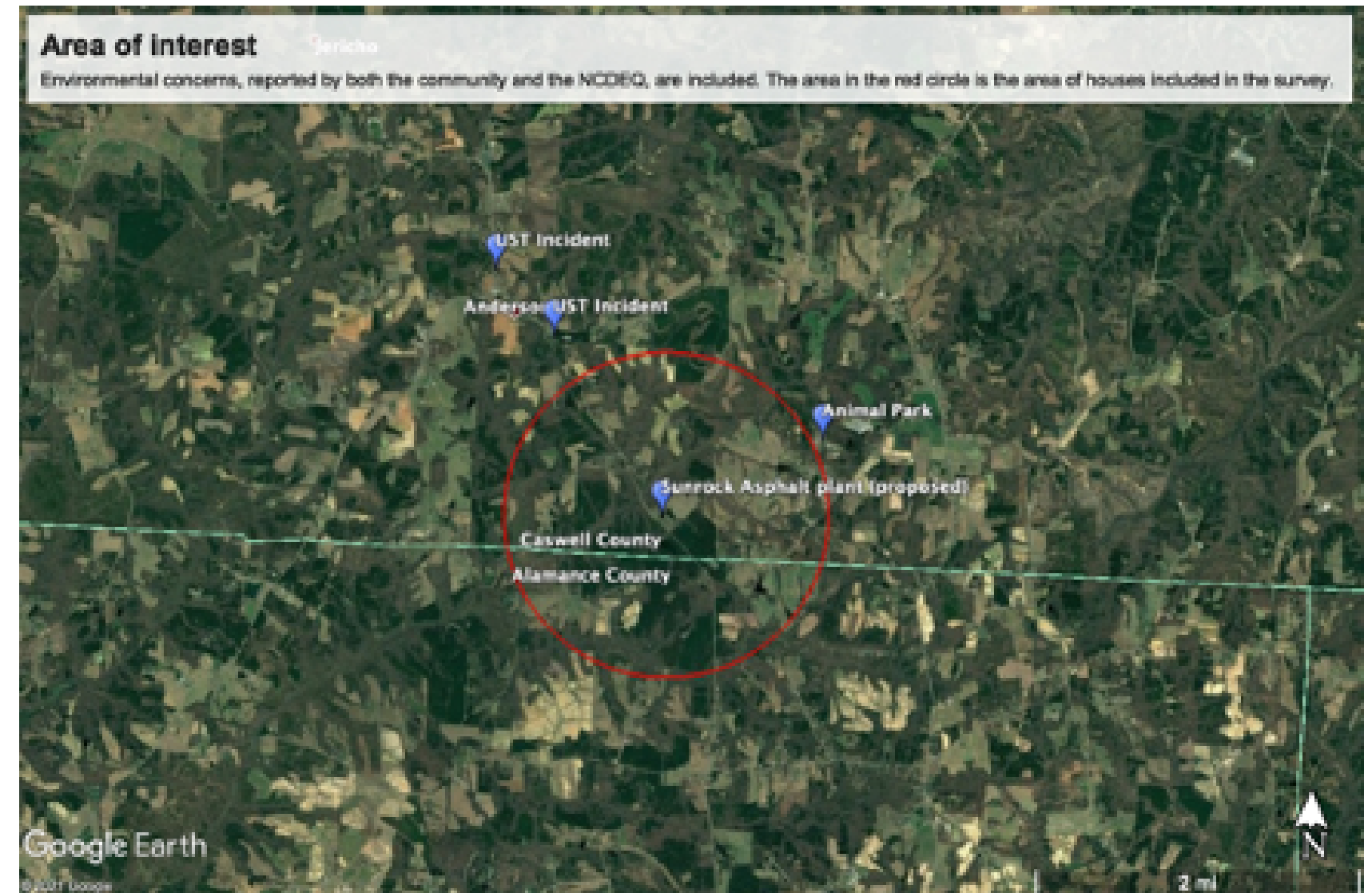
With support from Amy Kryston & Dr. Courtney Woods

BACKGROUND

The Anderson Community in Caswell County has been selected as the proposed site for an asphalt plant



Residents' home are located within a **quarter-mile** of the proposed site



ANDERSON COMMUNITY



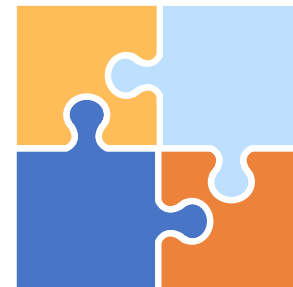
Demographics

83% of residents self-identify as African American, Latinx, or American Indian



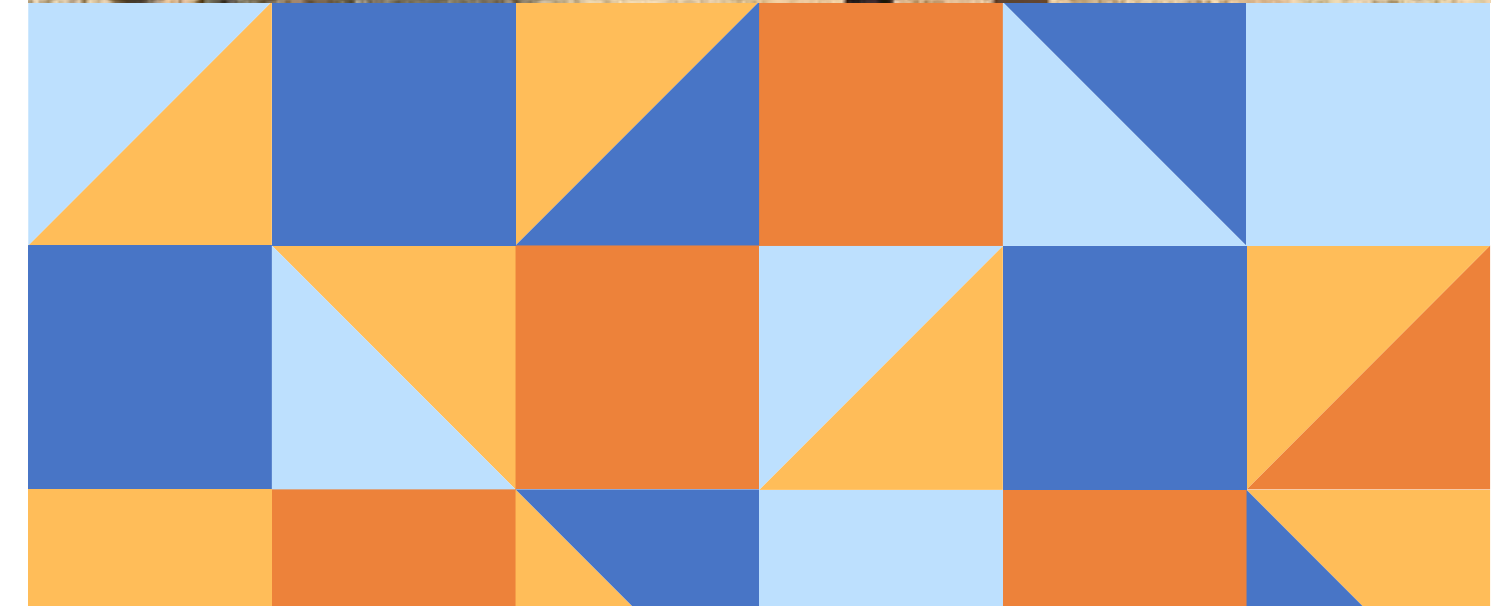
Environment

The community is already experiencing nuisances from a local animal center

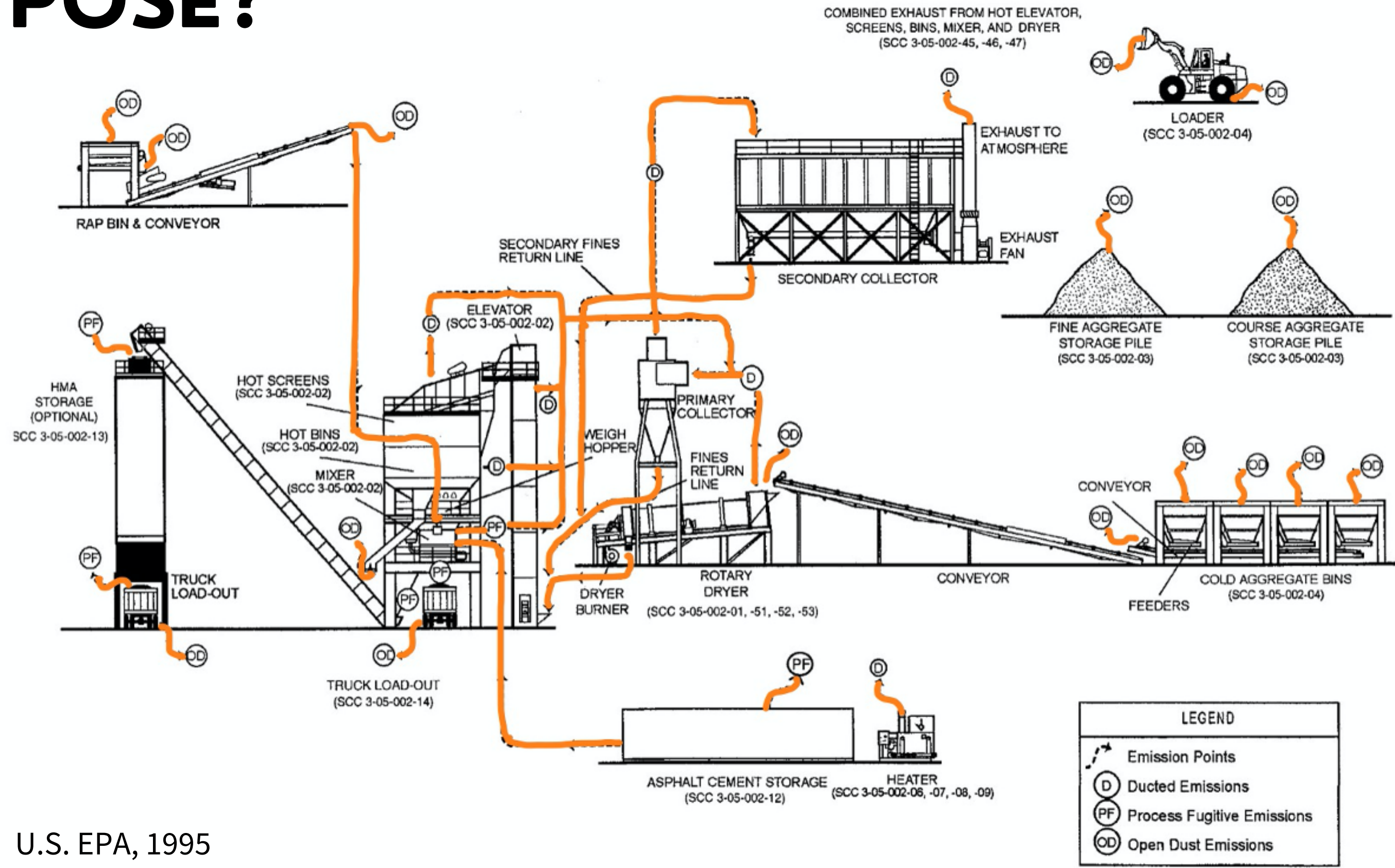


Assets & Advocacy

Residents of Anderson Township mobilized to fight plant approval



WHAT HEALTH THREATS DO ASPHALT PLANTS POSE?



U.S. EPA, 1995

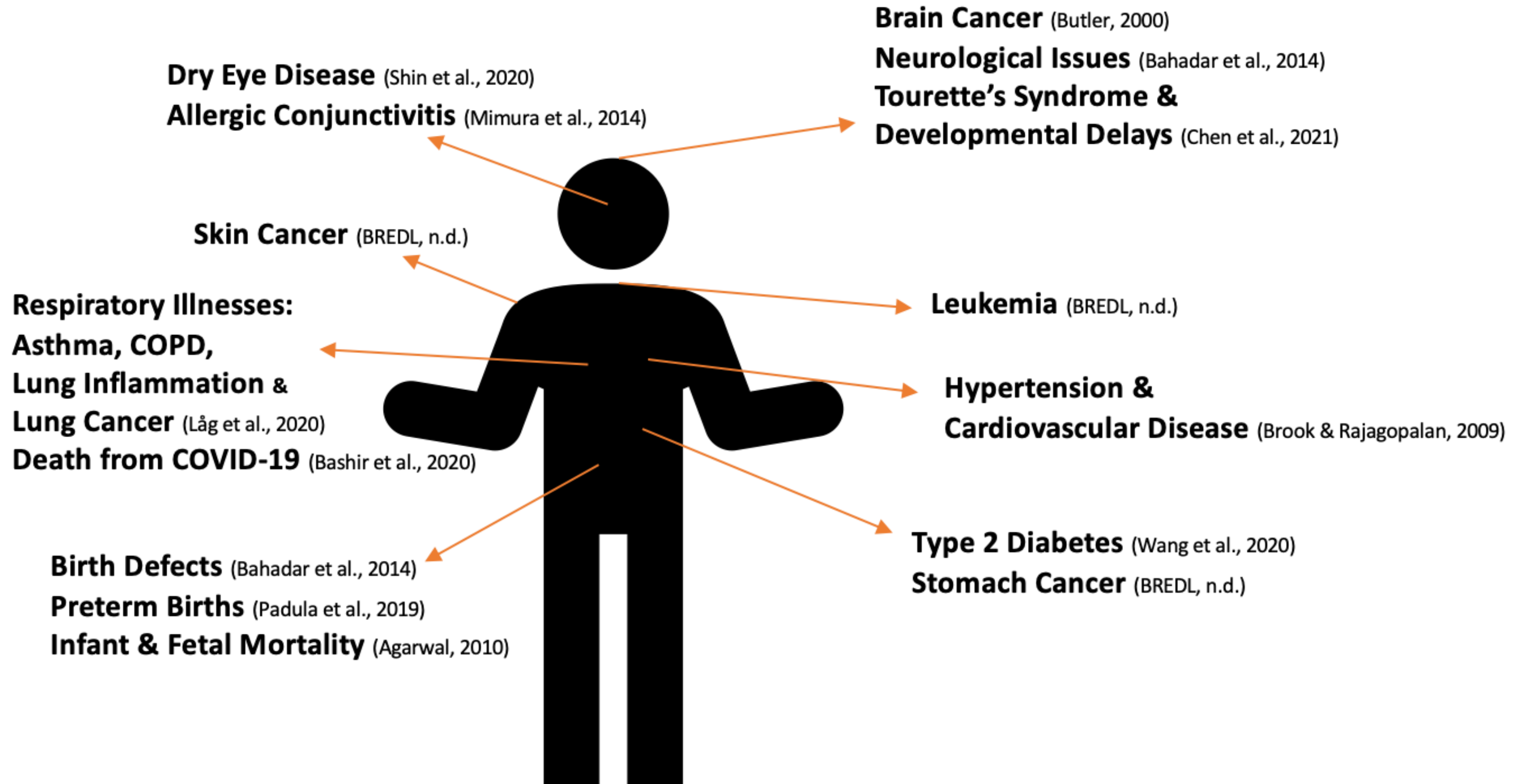
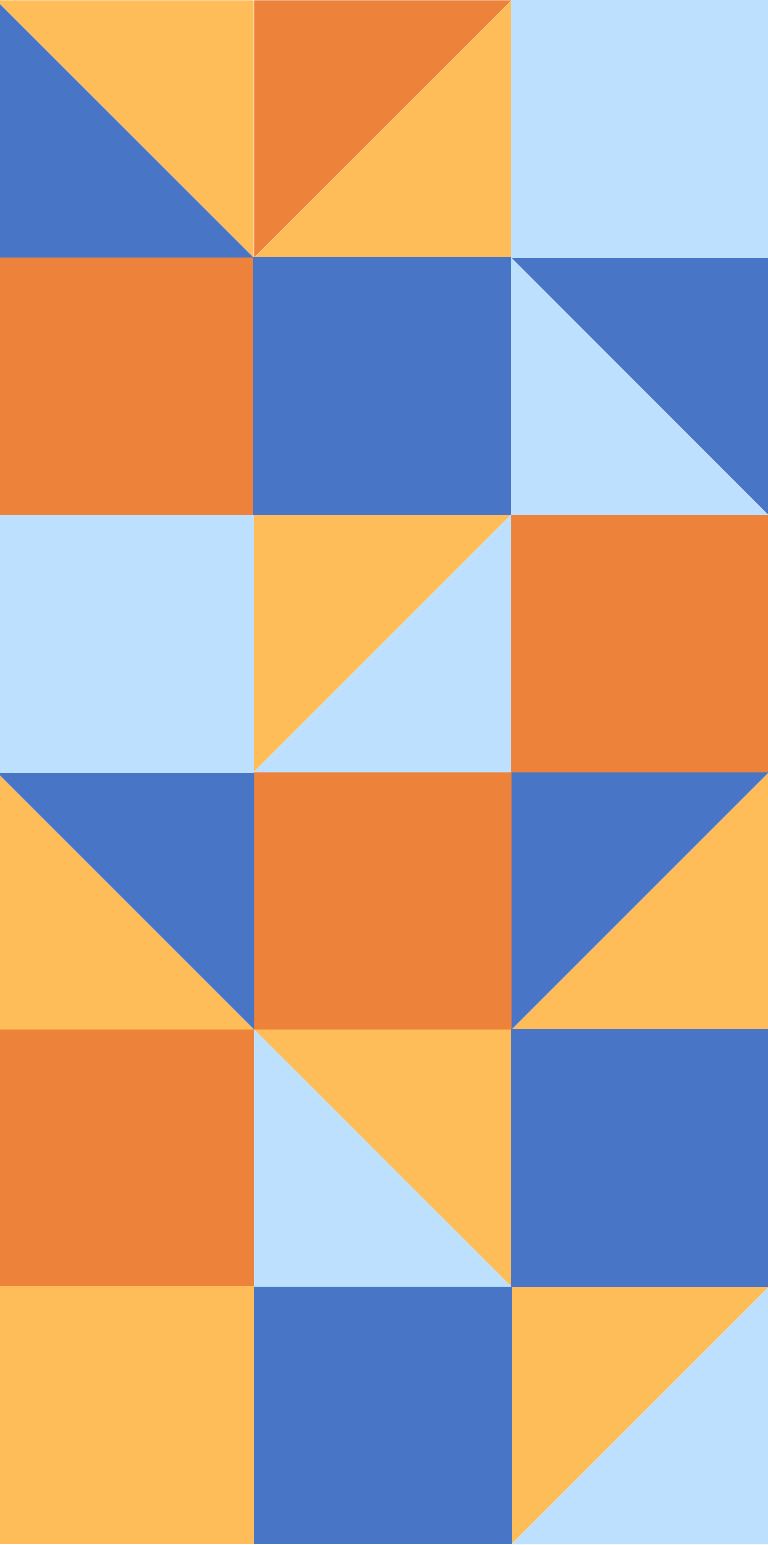
ASPHALT PLANTS PRODUCE TOXIC CHEMICALS

- These include:
 - **Particulate Matter (PM), Sulfur Dioxides (SO₂), Polycyclic Aromatic Hydrocarbons (PAH), Hydrogen Sulfides (H₂S), Carbon Disulfides, Formaldehyde, Cadmium, Arsenic, Benzene, Nitrogen Oxides (BREDL, n.d.)**
- Existing literature considers occupational exposure but not residential exposure to asphalt plant pollution



David Nunuk, 2013

ASSOCIATED HEALTH IMPACTS



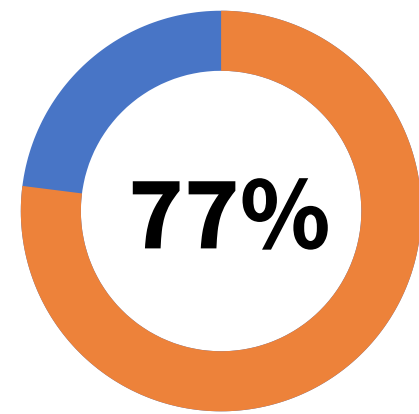
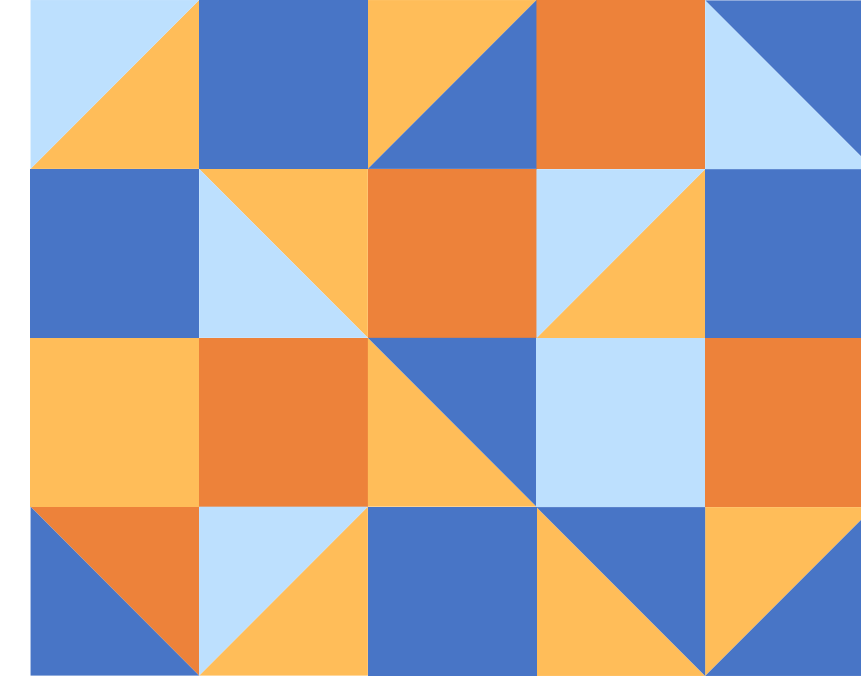
COMMUNITY HEALTH ASSESSMENT

- The Shoffner Report found that the CHA for Caswell County & NCDEQ EJ Snapshot Report did not accurately reflect demographics, health outcomes, and concerns of the Anderson Community
- Partnership between Anderson Community Group (ACE), UNC Environmental Justice Action Research Clinic, & NC Institute of Public Health
- Phone-based & In-person CHA was developed specifically for homes within a one-mile radius of the proposed asphalt plant
- **Community-based participatory research methods utilized throughout the partnership**

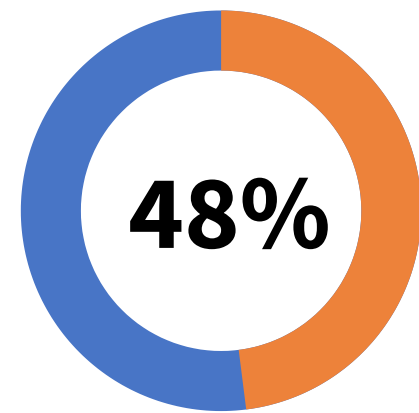


RESULTS

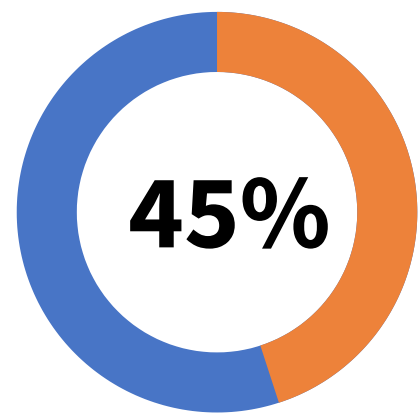
n = 48



ANDERSON RESIDENTS REPORT **AT LEAST ONE** FORMALLY DIAGNOSED CHRONIC ILLNESS



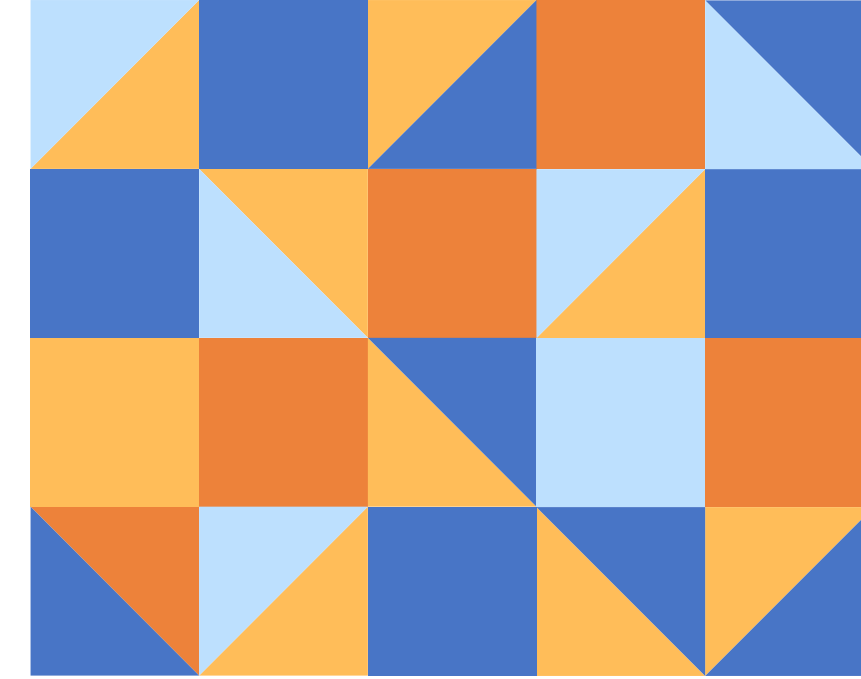
ANDERSON RESIDENTS REPORT **3 OR MORE** FORMALLY DIAGNOSED CHRONIC ILLNESSES



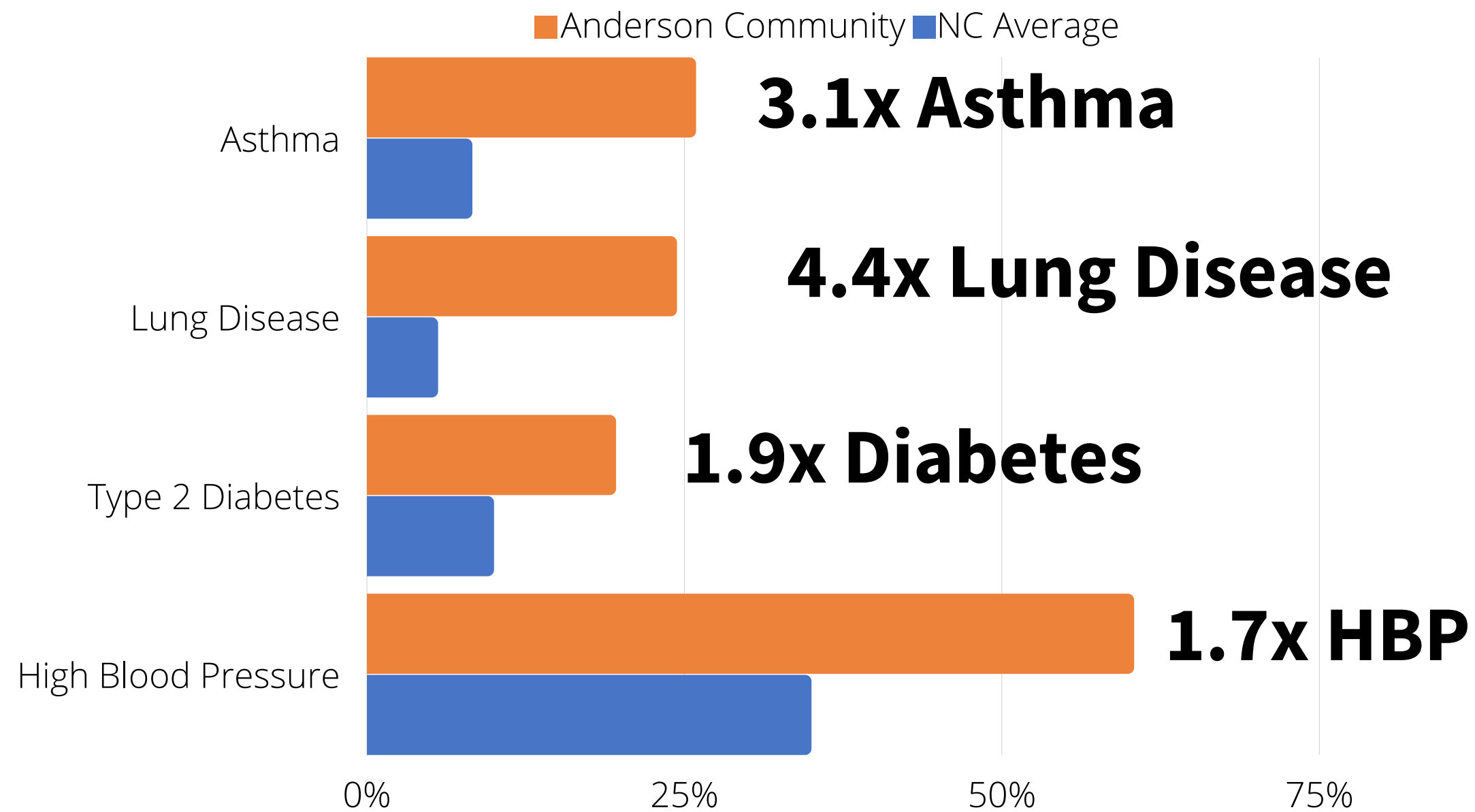
ANDERSON RESIDENTS REPORT **AT LEAST ONE** **DISABILITY** THAT LIMITS LIFE ACTIVITIES

RESULTS

n = 48



Prevalence of Health Issues & Disabilities in Anderson vs. NC Averages



RESULTS

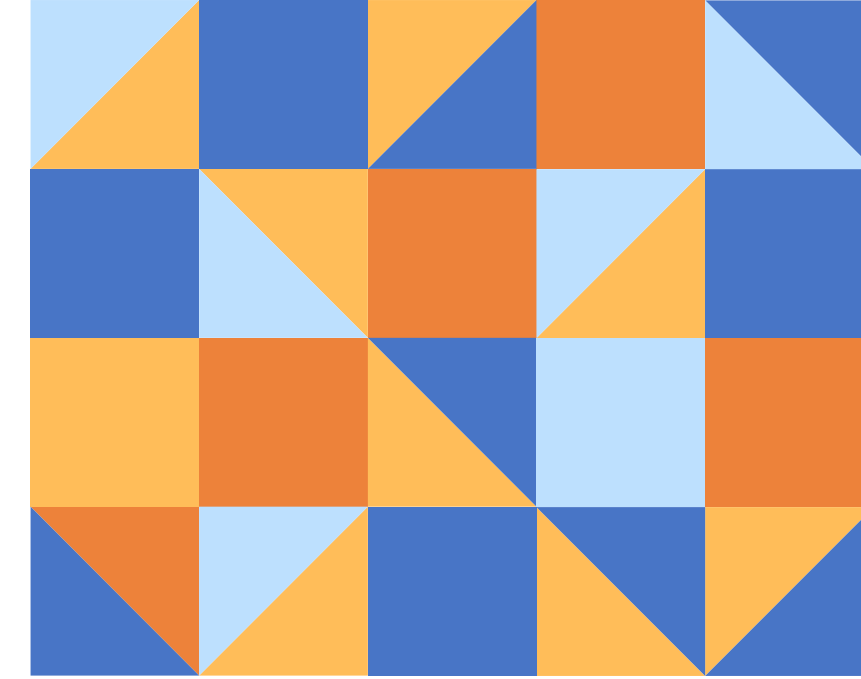
n = 48

Cumulative Impacts

6.2x Fewer physicians in Caswell County
vs. NC averages

60% Residents report plumes of smoke

62% Residents report strange odors



CUMULATIVE IMPACTS

Concerned Anderson citizens are also worried about:



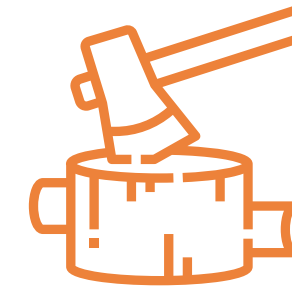
Decreased Property Values



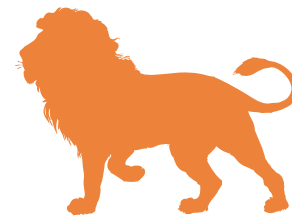
Lack of access to physicians



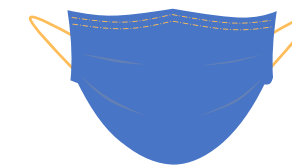
Increased Truck Traffic



Recent Tree Clearing



Nuisances already present
in the community



Increased Risk of COVID-19



Limited Economic Opportunities



SLAPP lawsuit filed against 58
residents to stifle organizing



RESIDENT CONCERNS ABOUT THE PROPOSED FACILITY

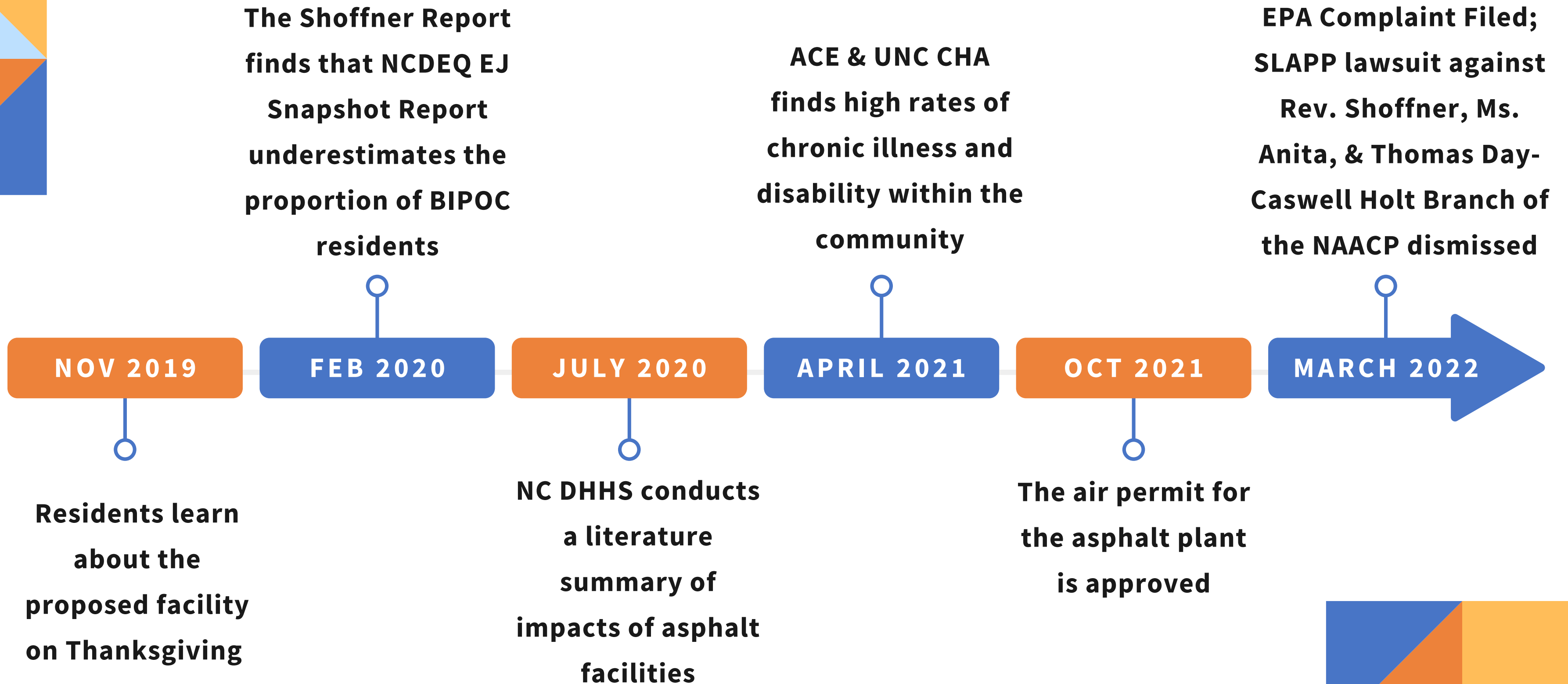
"Our health is more important than a polluting industry.....We know COVID-19 has hit the Black and Brown communities very hard. **Why add another stressor to the list? Let the people breathe freely and deny the air permit. Do not give them a permit to kill. Do not give them a license to kill."**

POLICIES ARE NEEDED TO PROTECT ANDERSON & SIMILAR COMMUNITIES

- Combat environmental racism
- Incorporate cumulative impacts in the permitting process
- Place the burden of proof on industries and not on communities
- Protect community organizers from baseless lawsuits

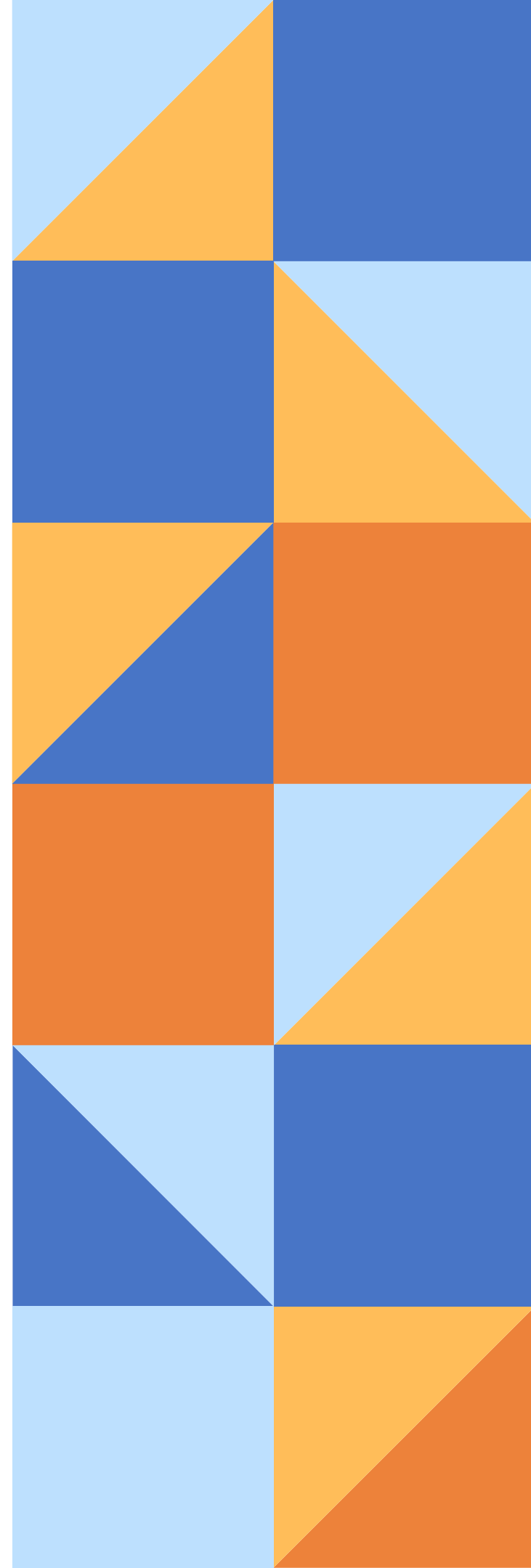


THE ANDERSON COMMUNITY HAS BEEN EFFECTIVELY ORGANIZING SINCE 2019



ACE HAS FILED MULTIPLE APPEALS SINCE 2022

- March 2022
 - EPA Title VI Complaint Filed
 - ADA Title II Complaint Filed
 - Watershed Permit Appeal
- Subchapter 01C, Zoning, and Other Regulatory Changes
- Protections for Disabilities



THE ONUS FOR PROTECTIONS IS ON COMMUNITIES



- ACE has utilized numerous and varied strategies to combat the proposed facility
 - **Burden of proof is placed on communities**

TAKE ACTION TODAY

- Donate to communities fighting asphalt plants & other polluting industries
- Join the North Carolina Environmental Justice Network
- Contact your State Representatives
- Write a letter to Governor Cooper
- Follow EJ media and EJ listservs
- Spread the word to friends and family



Bill Lindeke, 2019

ACKNOWLEDGEMENTS

We would like to thank UNC students Dhara Patel, Susie Proctor, Darnisha Pulley, Nyla Ruiz, Kadiata Toumbou, Amanda Ullman, community resident Rufus Knight, & NCIPH staff Matthew Simon, John Wallace, and Erin Magee for their support with this study.

We would like to extend our gratitude to Dr. Geni Eng, all donors who support this award and lecture, the Department of Health Behavior and the Scholarship Selection Committee.



REFERENCES

- Agarwal, N., Banernghansa, C., & Bui, L. T. (2010). Toxic exposure in America: estimating fetal and infant health outcomes from 14 years of TRI reporting. *Journal of health economics*, 29(4), 557–574. <https://doi.org/10.1016/j.jhealeco.2010.04.002>
- Anderson Community Group, Inc. (ACE) (2021). *We Need Sustainable Development*. Anderson Community Group - Sustainable Development. <https://andersoncommunitygroup.org/>
- Bashir, M. F., Ma, B. J., Bilal, Komal, B., Bashir, M. A., Farooq, T. H., Iqbal, N., & Bashir, M. (2020). Correlation between environmental pollution indicators and COVID-19 pandemic: A brief study in Californian context. *Environmental research*, 187, 109652. <https://doi.org/10.1016/j.envres.2020.109652>
- Brook, R. D., & Rajagopalan, S. (2009). Particulate matter, air pollution, and blood pressure. *Journal of the American Society of Hypertension : JASH*, 3(5), 332–350. <https://doi.org/10.1016/j.jash.2009.08.005>
- Bahadar, H., Mostafalou, S., & Abdollahi, M. (2014). Current understandings and perspectives on non-cancer health effects of benzene: a global concern. *Toxicology and applied pharmacology*, 276(2), 83–94. <https://doi.org/10.1016/j.taap.2014.02.012>
- Blue Ridge Environmental Defense League (BREDL). (n.d.). ASPHALT PLANTS CONTAMINANTS OF CONCERN: An overview of 7 toxic substances released from asphalt processing facilities and their known effects on human health. [Fact sheet]. <https://sustainablemadison.org/files/factsheet.pdf>
- Butler, M. A. S. (2000). Health Effects of Occupational Exposure to Asphalt. United States: U.S. Department of Health and Human Services, Public Health Service, Centers for Disease Control and Prevention, National Institute for Occupational Safety and Health.
- Caswell County Community Health Assessment 2019. (2020, February). Caswell County Health Department. [https://schs.dph.ncdhhs.gov/units/ldas/cha2019/Caswell%20County%20CHA%202019%20\(1\).pdf](https://schs.dph.ncdhhs.gov/units/ldas/cha2019/Caswell%20County%20CHA%202019%20(1).pdf)
- CDC. (2021, March 30). Most Recent Asthma State Data. CDC: Centers for Disease Control and Prevention. https://www.cdc.gov/asthma/most_recent_data_states.htm
- Chen, H.L., Zhang, R., Tsai, S., Chou, R.H., Hsu, Y.C., Fan, H.C., Muo, C.H., Hsu, C.Y., & Chang, K.H. (2014). Ambient Air Pollution Exposure and Risk of Developmental Delay in Children and Teenagers in Taiwan. *Atmosphere*. 12(8):1039. <https://doi.org/10.3390/atmos12081039>
- Låg, M., Øvrevik, J., Refsnes, M., & Holme, J. A. (2020). Potential role of polycyclic aromatic hydrocarbons in air pollution-induced non-malignant respiratory diseases. *Respiratory research*, 21(1), 299. <https://doi.org/10.1186/s12931-020-01563-1>
- Lindeke, B. (2019, April 2). It's pothole-filling time. So where does the asphalt come from? [Photograph]. *MinnPost*. <https://www.minnpost.com/cityscape/2019/04/industrial-era-lifeline-pothole-factory-looms-large/>

REFERENCES

Mimura, T., Ichinose, T., Yamagami, S., Fujishima, H., Kamei, Y., Goto, M., Takada, S., & Matsubara, M. (2014). Airborne particulate matter (PM_{2.5}) and the prevalence of allergic conjunctivitis in Japan. *The Science of the total environment*, 487, 493–499. <https://doi.org/10.1016/j.scitotenv.2014.04.057>

NC Division of Public Health. (2021). Data – Community and Clinical Connections for Prevention and Health. *Community and Clinical Connections for Prevention and Health*. <https://www.communityclinicalconnections.com/data/>

Nunuk, D. (2013, May 6). Smoke Plume From Asphalt Plant. [Photograph]. *FineArtAmerican*. <https://fineartamerica.com/featured/smoke-plume-from-asphalt-plant-david-nunuk.html>

Padula, A. M., Yang, W., Lurmann, F. W., Balmes, J., Hammond, S. K., & Shaw, G. M. (2019). Prenatal exposure to air pollution, maternal diabetes and preterm birth. *Environmental research*, 170, 160–167. <https://doi.org/10.1016/j.envres.2018.12.031>

Pleasants, R. A., Herrick, H., & Liao, W. (2013). The prevalence, characteristics, and impact of chronic obstructive pulmonary disease in North Carolina. *North Carolina medical journal*, 74(5), 376–383.

Savelli, L., Kryston, A., & Woods, C. (2021, August). Report on Anderson Community Environmental Quality and Health. University of North Carolina at Chapel Hill. <https://img1.wsimg.com/blobby/go/7dbe2f27-1daa-4e83-a9f5-b283edea88dd/downloads/Report%20on%20Anderson%20Community%20Environmental%20Qua.pdf?ver=1647287496256>

Shin, J., Lee, H., & Kim, H. (2020). Association between Exposure to Ambient Air Pollution and Age-Related Cataract: A Nationwide Population-Based Retrospective Cohort Study. *International journal of environmental research and public health*, 17(24), 9231. <https://doi.org/10.3390/ijerph17249231>

SHRM. (2019, November 5). Does the Americans with Disabilities Act (ADA) provide a list of conditions that are covered under the act? *SHRM*. https://www.shrm.org/resourcesandtools/tools-and-samples/hr-qa/pages/cms_011495.aspx

U.S. Environmental Protection Agency. (1995, January). Volume I: Stationary Point and Area Source. *CHEJ. Compilation of Air Pollution Emissions Factors*, I(5), 11.1-0 - 11.1-2. <http://chej.org/wp-content/uploads/Asphalt-Plants-PUB-131.pdf>

Wang, M., Jin, Y., Dai, T., Yu, C., Zheng, S., Nie, Y., & Bai, Y. (2020). Association between ambient particulate matter (PM₁₀) and incidence of diabetes in northwest of China: A prospective cohort study. *Ecotoxicology and environmental safety*, 202, 110880. <https://doi.org/10.1016/j.ecoenv.2020.110880>