

**Annual Report
July 1, 1993 - June 30, 1994
Department of Epidemiology**

I. Department Organization and Administration

Support Staff

(as of June 30, 1994)

Administrative Staff

Gail King	Administrative Manager
Joyce Allen	Registrar
Nancy Colvin	Assistant Registrar
Carolyn Cooke	Fiscal Manager
Stephanie Miller	Accounting Technician
Crystal Burnette	Accounting Technician
Amy Webb	Accounting Technician
Phyllis Johnson	Administrative Assistant
Lesa McPherson	Administrative Assistant

Secretarial Staff

Virginia Reid	Secretary IV
Edna Lennon	Secretary IV
Betsy Seagroves	Secretary IV
Mimi Haebig	Secretary IV
Carmen Woody	Secretary IV
Jane Foust	Secretary IV
Carol Morton	Secretary IV
Anne Crumpler	Secretary IV
Kathy Sutton	Clerk/Typist IV
Susan King	Clerk III

Research Staff

Lorraine Alexander	Research Associate
Susanne Wolf	Research Associate
Darrah Degnan	Social Research Associate
Marilyn Knowles	Social Research Assistant
Catherine Paton	Social Research Assistant
Jadis Robinson	Social Research Assistant
Tammie Hooker	Social Research Assistant
Girard Salak	Social Research Assistant
Helen Sun	Social Reserach Assistant
Jonathan Frye	Research Technician
Boyd Yount	Research Technician

Data Processing Staff

Terry Hudgins	Applications Analyst Programmer
Robert Kleckner	Applications Analyst Programmer
Vic Rhodes	Applications Analyst Programmer
Joy Wood	Applications Analyst Programmer
Eileen Gregory	Applications Analyst Programmer
Richard Howard	Applications Analyst Programmer
Joanna Smith	Applications Analyst Programmer
Ans Janssens	Applications Programmer
Veda Manley	Data Processing Coordinator
Debra Weiner	Statistician

Employee Terminations

Charylmayne Alston	Social Research Assistant, Resignation
Stephanie Watkins	Applications Programmer, Resignation

II. Faculty and Students**A. List of Faculty [* indicates primary of multiple academic appointments]****1. Full-Time Faculty**

Ralph S. Baric, *Associate Professor, Epidemiology
Associate Professor, Microbiology & Immunology

Kathleen Conway, Research Assistant Professor

Hilton Goulson, Professor

J. Ed Hall, *Associate Professor, Epidemiology
Associate Professor, Pathology

Gerardo Heiss, Professor

Irva Hertz-Picciotto, Assistant Professor

Barbara S. Hulka, *Kenan Professor
Clinical Professor, Family Medicine
Adjunct Professor of Community and Family
Medicine, Duke University Medical Center

Michel A. Ibrahim, Dean, School of Public Health
*Professor, Epidemiology
Professor, Social and Administrative Medicine

Berton H. Kaplan, Professor

Lenore Kohlmeier, Professor, Epidemiology
*Professor, Nutrition

Lester Lee, Research Assistant Professor

Edison Liu, Associate Professor, Epidemiology
*Associate Professor, Medicine

Dana Loomis, Assistant Professor

Robert Millikan, Assistant Professor
Patricia Moorman, Research Assistant Professor
Beth Newman, Assistant Professor
Andrew Olshan, Assistant Professor
Jennifer Ratcliffe, Research Associate Professor
Wayne Rosamond, Assistant Professor
Rachel Royce, Assistant Professor
David A. Savitz, Professor
Victor J. Schoenbach, Associate Professor
J. Richard Seed, Professor
Cecil G. Sheps (Emeritus), Professor, Epidemiology
*Professor, Social and Administrative Medicine
Carl M. Shy, *Professor & Chair, Epidemiology
Professor, Environmental Sciences and Engineering
Clinical Professor, Family Medicine
Lola Stamm, Associate Professor
June Stevens, Associate Professor, Epidemiology
*Associate Professor, Nutrition
James Thomas, Assistant Professor
Herman A. Tyroler, Alumni Distinguished Professor
Marilyn Vine, Assistant Professor
David Weber, Associate Professor, Epidemiology
*Associate Professor, Medicine
Kristen Weigle, *Assistant Professor, Epidemiology
Assistant Professor, Pediatrics
Steven B. Wing, Assistant Professor

2. Part-Time Faculty

Christine Moe, Research Assistant Professor

3. Visiting Faculty

None

4. Adjunct and Fixed-Term Joint Appointments

Timothy Aldrich, Adjunct Assistant Professor
Naomar Almeida-Filho, Adjunct Associate Professor
Dragna Andjelkovich, Adjunct Associate Professor
Elizabeth Andrews, Adjunct Assistant Professor
Michael H. Arrighi, Adjunct Assistant Professor
Donna Baird, Adjunct Assistant Professor
John Barefoot, Adjunct Associate Professor
James C. Barrett, Adjunct Professor
James Beck, Adjunct Professor
*Professor, Dental Ecology
Richard A. Berzon, Adjunct Assistant Professor

Dan German Blazer, Adjunct Professor
Brian A. Boehlecke, Clinical Associate Professor
*Associate Professor, Medicine
W. Eugene Broadhead, Adjunct Assistant Professor
Timothy S. Carey, Clinical Associate Professor
*Associate Professor, Medicine
Dennis A. Clements, III, Adjunct Assistant Professor
Thomas Cole, Adjunct Assistant Professor
Joan Cornoni-Huntley, Adjunct Professor
John R. Crouse, Adjunct Associate Professor
Gordon H. DeFriese, Clinical Professor, Epidemiology
*Professor, Social and Administrative Medicine
Richard B. Everson, Adjunct Professor
Jo-David Fine, Clinical Professor, Epidemiology
*Professor, Dermatology
Suzanne Fletcher, Clinical Professor
Judith A. Fortney, Adjunct Associate Professor
Jean French, Adjunct Professor
Joanne Garrett, Adjunct Assistant Professor
*Research Associate Professor, Sheps Center for Health Services Research
Peter Garrett, Adjunct Assistant Professor
Raymond S. Greenberg, Adjunct Associate Professor
Jack Griffith, Adjunct Professor
Harry A. Guess, Adjunct Professor
Curtis G. Hames, Clinical Professor
Russell P. Harris, Adjunct Assistant Professor
*Assistant Professor, Medicine
Carl G. Hayes, Adjunct Professor
Siegfried H. Heyden, Adjunct Professor
Michael Hogan, Adjunct Associate Professor
Ronald J. Hunt, Clinical Professor
*Professor, Dental Ecology
Nancy Hunter, Adjunct Assistant Professor
Debra E. Irwin, Adjunct Assistant Professor
Sherman James, Adjunct Professor
Ulrich Keil, Adjunct Professor
Suzanne Landis, Adjunct Assistant Professor
*Clinical Assistant Professor, Medicine
Eugene J. Lengerich, Adjunct Assistant Professor
Ruth E. Little, Adjunct Professor
J. Newton MacCormack, Adjunct Associate Professor
Peter Margolis, Clinical Assistant Professor
*Assistant Professor, Pediatrics
Margaret F. McCann, Adjunct Assistant Professor
William F. McDonnell, Adjunct Associate Professor
Melinda S. Meade, Adjunct Professor, Epidemiology
*Professor, Geography
Wilbur Milhous, Adjunct Associate Professor

Dexter Morris, Adjunct Assistant Professor
*Assistant Professor, Emergency Medicine

Azmi A. Nabulsi, Adjunct Assistant Professor

George R. Parkerson, Adjunct Associate Professor

Miquel Porta, Adjunct Associate Professor

David F. Ransohoff, Clinical Professor
*Professor, Medicine

Walter J. Rogan, Adjunct Associate Professor

Michael J. Rosenberg, Adjunct Associate Professor

Carol Runyan, Adjunct Associate Professor
*Associate Professor, Health Behavior and Health Education

Desmond K. Runyan, Clinical Assistant Professor
*Assistant Professor, Social and Administrative Medicine

Gregory Samsa, Adjunct Assistant Professor

Dale Sandler, Adjunct Associate Professor

Robert S. Sandler, Clinical Associate Professor
*Associate Professor, Medicine

Joellen M. Schildkraut, Adjunct Assistant Professor

David Sheps, Clinical Professor
*Professor, Cardiology

Ilene C. Siegler, Adjunct Associate Professor

Philip Sloane, Clinical Associate Professor
*Professor, Family Medicine

David C. Sokal, Adjunct Assistant Professor

C. Gregory Smith, Adjunct Assistant Professor

John Stamm, Adjunct Professor
*Professor and Dean, Dentistry

Paul E. Stang, Adjunct Assistant Professor

David Strogatz, Adjunct Assistant Professor

Patricia Tennis, Adjunct Assistant Professor

Hugh H. Tilson, Adjunct Professor

James F. Toole, Adjunct Professor

Edward H. Wagner, Clinical Professor

Jane Weintraub, Adjunct Associate Professor
*Professor, Dental Ecology

Alice White, Adjunct Assistant Professor

Timothy Wilcosky, Adjunct Assistant Professor

Allen J. Wilcox, Adjunct Professor

Mark E. Williams, Clinical Associate Professor, Epidemiology
*Associate Professor, Medicine

Redford Williams, Adjunct Professor

Bonnie C. Yankaskas, Adjunct Assistant Professor
*Assistant Professor, Radiology

B. Changes During the Year

1. Additions:

Jennifer Ratcliffe, Research Associate Professor
Robert Millikan, Assistant Professor
Patricia Moorman, Research Assistant Professor
June Stevens, Associate Professor

2. Promotions: (effective 1993/94)

Edison Liu promoted to Associate Professor

3. Changes in Rank:

None

4. Leaves:

Barbara Hulka - Kenan Leave
Steven Wing - Off campus Assignment

5. Losses: Resignations

None

Losses: Retirement

None

C. Honors

Faculty Honors

Carl M. Shy received the School of Public Health's Edward G. McGavran Award for Excellence in Teaching.

H. A. Tyroler received the Distinguished Achievement Award from the National American Heart Association.

Student Honors

Mark Moss and Richard Pierce received the Sidney Kark Award for Distinguished Teaching Assistance.

Glinda Cooper was the recipient of the Lilienfeld Student Prize Paper at the meeting of the Society for Epidemiologic Research.

III. Instructional Programs

- A. There have been no major curriculum changes during the 1993-94 academic year.
- B. The Department of Epidemiology will participate in the School-wide Public Health Leadership program. Suitable applicants for the DrPH in Epidemiology under the Leadership program will be identified from among applicants to the Leadership program or applicants to the Epidemiology PhD program. They should hold the MD or another doctoral degree, and should have completed a master's degree in epidemiology or equivalent coursework. The DrPH will be an applied degree.
- C. Overall learning objectives in Epidemiology are unchanged from 1992/93. Faculty advisors assist students in designing programs that will meet these objectives.

MPH/MSPH:

The MPH is used as a terminal master's program for a student holding a doctoral degree (MD, DDS, DVM, PhD). The MSPH is most commonly used as a preliminary graduate program for a student with a bachelor's degree who intends to proceed to the PhD program.

Students enrolled in the master's programs complete coursework required for that program by the School of Public Health, in addition to a sequence of methods courses in Epidemiology and Biostatistics and a minimum of one applied course in an epidemiological research area. Master's students must acquire competence in statistical computing and data management. Additional requirements include a comprehensive written examination covering material included in the program, a research project resulting in an acceptable master's paper, and a seminar presentation of the research.

PhD:

The PhD is the research doctoral degree in epidemiology. Students complete a common sequence of methods courses in epidemiology and biostatistics, a minimum of two applied courses in epidemiological research areas, additional biostatistics courses, and other coursework as prescribed individually to meet the student's specific needs. Competence must be demonstrated in statistical computing and data management, and in scientific writing. The program includes a comprehensive written examination, an oral examination focused on the research proposal, and a dissertation of high quality, and a defense of the dissertation research.

DrPH:

Requirements for the new DrPH program under Public Health Leadership are being developed.

- D. There were no special courses or programs offered during the 1993-94 academic year.

E. Field training experience in Epidemiology is not handled through the method of placement with an agency or institution. Students enter the program with satisfactory research experience or work individually with faculty in ongoing research projects.

IV. Research Programs

Grant Awards

Carcinogen Metabolizing Enzymes and Head and Neck Cancer, PI: **Andrew Olshan**, NIH. \$843,371

Diarrheal Illness Surveillance in Child Day Care, PI: **Kristen Weigle**, Maternal and Child Health Research Program. \$699,673

Epidemiological Studies of the Accident at Three Mile Island, PI: **Steven Wing**, Center for Environmental Studies, John Snow Institute. \$112,384.

Environmental Exposure and the Effects on the Immune System, PI: **Marilyn Vine**, CDC. \$523,659

Low Cholesterol/Mortality Association in Blacks and Women (Sub-contract with University of South Carolina), PI: **H. A. Tyroler**, DHHS. \$5,293

Ozone Exposure and Daily Mortality in Mexico City: A Time Series Analysis, PI: **Dana Loomis**, HEI. \$86,936

Paternal Occupation and Risk of Birth Defects in Offspring, PI: **Andrew Olshan**, March of Dimes Foundation. \$30,000

Study of Multiple Myeloma Among Workers Exposed to Ionizing Radiation, PI: **Steven Wing**, CDC. \$403,000

Publications

Abrams B, Duncan D, Hertz-Picciotto I. A prospective study of dietary intake and acquired immune deficiency syndrome in HIV seropositive homosexual men. *J AIDS* 6(8):949-958, 1993.

Alderman BW, Baron AE, Savitz DA. Cautions in the use of antecedents as surrogates for confounders. *American Journal of Epidemiology* 137:1259-72, 1993.

Ananth CV, Savitz DA. Vaginal bleeding and adverse reproductive outcomes: a meta-analysis. *Paediatric and Perinatal Epidemiology* 8:62-78, 1994.

Andrews KW, Savitz DA, Hertz-Picciotto I. Prenatal lead exposure in relation to gestational age and birth weight: a review of epidemiologic studies. *American Journal of Industrial Medicine* 26:13-32, 1994.

Angulo F, Millikan R, Malmgren R. Questionable link between human lung cancer and pet bird exposure. *J Am Vet Med Assoc* 202:1345, 1993.

Arrighi HM, Hertz-Picciotto I. The evolving concept of the healthy worker survivor effect. *Epidemiology* 5:189-196, 1994.

Arrighi HM, Hertz-Picciotto I. Re: Definitions, sources, magnitude, effect modifiers and strategies of reduction of the healthy worker effect [Letter]. *J Occup Med* 35:890-891, 1993.

Austin MA, Newman B, Selby JV, Edwards K, Mayer E, Krauss RM. Genetics of low-density lipoprotein subclass phenotypes in women twins: Concordance, heritability and commingling analysis. *Arteriosclerosis & Thrombosis* 13:687-95, 1993.

Brenner H, Savitz DA, Gefeller O. The effects of joint misclassification of exposure and disease on epidemiologic measures of association. *Journal of Clinical Epidemiology* 46:1195-1202, 1993.

Breslow N, Olshan A, Beckwith JB, Moksness J, Feigel P, Green D. Ethnic variation in the incidence, diagnosis, prognosis and followup of children with Wilms Tumor. *J Natl Cancer Inst* 86:49-51, 1994.

Carter LR, Walton SE, Knowles MK, Wing S, Tyroler HA. Social inequality of stroke mortality among US black populations, 1968 to 1987. *Ethnicity Dis* 2:343-351, 1993.

Casper M, Wing S, Strogatz D, Davis CE, Tyroler HA. Stroke mortality trends and antihypertensive drug use, letter in reply to Smith and Pinckney. *American Journal of Public Health* 83:1643, 1993.

Ciesielski S, Loomis DP, Mims SR, Auer A. Pesticide exposure, cholinesterase depression, and symptoms among North Carolina migrant farmworkers. *Am J Public Health* 84:446-451, 1994.

- Cohn SE, Knorr KL, Gilligan P, Smiley L, **Weber DJ**. Pertussis rare in HIV disease. *Am Rev Resp Dis* 147:411-413, 1993.
- Cortessis V, Ingles S, **Millikan R**, Diep A, Sparkes R, Gatti R, Haile R. A linkage analysis of DRD2, a marker linked to the Ataxia Telangiectasia gene, in 68 families with premenopausal bilateral breast cancer. *Cancer Res* 5:5083-5086, 1993.
- Criqui MH, **Heiss G**, Cohn R, Cowan LD, Suchindran CM, Bandiwala S, Kritchevsky S, Jacobs DR, O'Grady HK, Davis CE. Plasma triglyceride level and mortality from coronary heart disease. *New England Journal of Medicine* 328:1220-5, 1993.
- Dargent-Molina P, James SA, Strogatz DS, **Savitz DA**. Association between maternal education and infant diarrhea in different household and community environments of Cebu, Philippines. *Social Science & Medicine* 38:343-50, 1994.
- Dennis BH, Zhukovsky GS, Shestov DB, Davis CE, Deev AD, Kim H, **Tyroler HA**. The association of education with coronary heart disease mortality in the USSR Lipid Research Clinics Study. *International J Epidemiology* 22(3):420-427, 1993.
- Durand ML, Calderwood SB, **Weber DJ**, Miller SI, Southwick FS, Caviness VS, Swartz MN. Acute bacterial meningitis in adults: A review of 483 episodes. *New Engl J Med* 328:21-28, 1993.
- Dovan T, Kaune WT, **Savitz DA**. Repeatability of measurements of residential magnetic fields and wire codes. *Bioelectromagnetics* 14:145-59, 1993.
- Evans JA, **Savitz DA**, Kanal E, Gillen J. Infertility and pregnancy outcome among MRI workers. *Journal of Occupational Medicine* 35:1191-5, 1993.
- Fletcher, LD, Berger LC, Peel SA, **Baric R**, Tidwell RR, Dykstra CC. Isolation and identification of three *Pneumocystis carinii* genes utilizing codon bias. *Gene* 129:167-174, 1993.
- Gallagher J, **Vine MF**, Everson RB, **Hulka BS**, Margolin BH, Truong Y, Griffith JD, Schramm MM. ³²P-Postlabelling analysis of DNA adducts in human sperm cells from smokers and nonsmokers. *Cancer Epidemiology, Biomarkers and Prevention*, 2:581-585, 1993.
- Hames CG, Rose K, Knowles M, Davis CE, **Tyroler HA**: Black-white comparisons of 20-year coronary heart disease mortality in the Evans County Heart Study. *Cardiology* 82:122-136, 1993.
- Hardham JM and **Stamm LV**. Identification and characterization of the Treponema pallidum tpn50 gene: an ompA homolog. *Infect Immun* 62:1015-1025, 1994.
- Haertel U, Keil U, Helmert U, Greiser E, Dai S, Gutzwiller F, Folsom AR, Szklo M, White AD, Schreiner PJ, **Tyroler HA**. The association of coronary risk factors with educational achievement: Results of the ARIC-MONICA Collaborative Studies. *Annals of Epidemiology* 3(5):S56-S61, 1993.

- Hertz-Picciotto I.** Effects of aspirin on female reproductive function and on *in utero* development, chap 8 in: *Beneficial and Toxic Effects of Aspirin*, SE Feinman, ed., CRC Press, December 1993.
- Hertz-Picciotto I, Croft J.** A quantitative review of the relationship between blood lead and blood pressure. *Epidemiologic Reviews* 15:352-373, 1993.
- Hertz-Picciotto I, Hu S-W.** The contribution of cadmium to smoking-induced lung cancer. *Am J Epidemiol* 138:607-608, 1993.
- Hertz-Picciotto I, Neutra RR.** Resolving discrepancies among studies: the influence of dose on effect size. *Epidemiology* 5:156-163, 1994.
- Hertz-Picciotto I, Smith AH.** Observations on the dose-response curve for arsenic and lung cancer. *Scand J Work Environ Health* 19:217-226, 1993.
- Herwaldt BL, Lew JF, Moe CL, Lewis DC, Humphrey CD, Monroe SS, Pon EW, Glass RI.** Characterization of a Variant Strain of Norwalk Virus from a Foodborne Outbreak of Gastroenteritis on a Cruise Ship in Hawaii. *J Clin Micro* 32(4):861-866, 1994.
- Hoff R, O'Shaughnessy MV, Schochetman G, Weber DJ, McAuley M, Lawrence DN.** Monitoring immunogenicity and infection in HIV vaccine efficacy trials. *AIDS Research Hum Retrovirol* 9(suppl 1):S71-S74, 1993.
- Hulka BS.** Influence of biomarkers on the design, methods, and interpretation of epidemiologic studies. *J Toxicol Environ Health* 40(2-3):389, 1993.
- Hulka BS, Garrett P.** Influence of Biomarkers on the Design, Methods, and Interpretation of Epidemiologic Studies (Abstract). *J Toxic and Environ Health*, 40:389, 1993.
- Humble CG, Malarcher AM, Tyroler HA.** Dietary Fiber and Coronary Heart Disease in Middle-aged Hypercholesterolemic Men. *Am J Preventive Medicine* 9(4):197-202, 1993.
- Ingles S, Haile R, Millikan R, Cortessis V, Elashoff R.** A logistic random-effects model for estimation of gene-environment interaction under heterogeneity: application to early-onset bilateral breast cancer data. *Genetic Epidem* 10:345, 1993.
- Ingles S, Millikan R, Ramos L, Slamon D, Haile R.** Somatic alterations in HER-2/neu and p53 infamilial breast cancer. *Genetic Epidemiol* 10:345, 1993.
- Irwin DE, Savitz DA, St. Andre KA, Hertz-Picciotto I.** Study of occupational risk factors for pregnancy-induced hypertension among active duty enlisted navy personnel. *Amer J Indus Med* 25:349-359, 1994.
- John EM, Savitz DA, Shy CM.** Spontaneous abortions among cosmetologists. *Epidemiology* 5:147-155, 1994.

Jones HE, Blundell GK, Tidwell RR, Hall JE, Farr SJ, Richards RJ. The accumulation of pentamidine and the toxic effects of the drug, its analogues and metabolites on isolated alveolar cells. *Toxicol* 80:1-12, 1993.

Kaplan BH. Commentary on anger kills: forgiveness as a scientific agenda. *Advances* 10(2):61-63, 1994.

Kaplan BH. Commentary on spiritual health. *Advances*, 9:30-33, 1993.

Kaplan BH, Munro-Blum H. Letter/commentary on Redford Williams The Trusting Heart, *Psychosomatic Medicine* 55:473-74, 1993.

Kaplan BH, Munroe-Blum H, Blazer D. Religion, health, and forgiveness, in Religious Factors in Aging and Health, edited by Jeffrey Levin. Newbury Park: Sage Publications, 1994.

Keil JE, Sutherland SE, Knapp RG, Lackland DT, Gazes PC, Tyroler HA. Mortality rates and risk factors for coronary disease in blacks as compared with white men and women. *NEJM* 329(2):73-8, 1993.

Khan AS, Moe CL, Glass RI, Monroe SS, Estes MK, Chapman LE, Jiang X, Humphrey C, Pon E, Iskander J, Schonberger. Norwalk virus-associated gastroenteritis traced to ice consumption aboard a cruise ship in Hawaii: comparison and application of molecular method-based assays. *J Clin Micro* 32(2):381-322, 1994.

Klonoff-Cohen H, Edelstein S, Savitz D. Cigarette smoking and preeclampsia. *American Journal of Obstetrics and Gynecology* 81:541-4, 1993.

Kohlmeier L. Gaps in dietary assessment methodology: Meal vs list based methods. *Proceedings of the 1st International Meetings on Dietary Assessment*. *Amer J Clin Nutr* 59:175S-179S, 1994.

Kohlmeier L. Health divergence during political division: East and West Germany - 'socioeconomic factors in health'. In *Europe Without Frontiers - The Implications for Health*. Eds: Normand, C.E.M. and Vaughan, J. P. England: John Wiley & Sons, pp. 57-75, 1993.

Kohlmeier L. Nutrition and the elderly in Germany. *Aging Clin Exp Res* 5:81-84, 1993.

Kohlmeier L (Ed.) Validation, quality control and measurement error in nutritional epidemiology. *Proceedings of the 4th WHO-BGA Meeting on Nutritional Epidemiology*. *EJCN* 47 (Suppl. 2): 1-77, 1993.

Laborde DJ, Weigle KA, Weber DJ, Kotch J. The effect of fecal contamination on diarrheal illness rates in day care centers. *Am J Epidemiol* 138:243-255, 1993.

Loomis DP, Kromhout H, Peipins LA, Kleckner RC, Iriye R, Savitz DA. Sampling design and methods of a large, randomized, multi-site survey of occupational magnetic field exposure. *Appl Occup Environ Hyg* 9:49-52, 1994.

Loomis DP, Savitz DA, Ananth CV. Breast cancer mortality among female electrical workers. *Journal of the National Cancer Institute* 86:921-925, 1994.

Loomis DP, Savitz DA. Effect of incomplete exposure assessment on epidemiologic dose-response analyses. *Scandinavian Journal of Work, Environment, and Health* 20:208-213, 1994.

Mayer EJ, Newman B, Quesenberry CP, Friedman GD, Selby JV. Alcohol consumption and insulin concentrations: The role of insulin in associations of alcohol intake with HDL-cholesterol and triglycerides. *Circulation* 88 [part 1]:2190-7, 1993.

Mayer EJ, Newman B, Quesenberry CP, Selby JV. Usual dietary fat intake and insulin concentrations in healthy women twins. *Diabetes Care* 16:1459-69, 1993.

McDonnell WF, Muller KE, Bromberg PA, Shy CM. Predictors of Individual Differences in Acute Response to Ozone Exposure. *Am Rev Respir Dis* 147:818-825, 1993.

Millikan R. Epidemiologic evidence showing that human papilloma virus infection causes most cervical intraepithelial neoplasia. *J Natl Cancer Inst* 36:392, 1994.

Millikan R, Ingles S, Diep A, Sparkes R, Haile R. Linkage analysis of chromosome 1p36 using 64 multiple breast or breast-ovarian cancer pedigrees. *Genetic Epidemiol* 10:345, 1993.

Moe CL, Gentsch J, Ando T, Grohmann G, Monroe SS, Jiang X, Wang J, Estes MK, Seto Y, Humphrey C, Stine S, Glass RI. Application of PCR to detect Norwalk Virus in fecal specimens from outbreaks of gastroenteritis. *J Clin Micro* 32(3):642-648, 1994.

Morrison H, Savitz D, Semenciw R, Hulka B, Mao Y, Morison D, Wigle D. Farming and prostate cancer mortality. *American Journal of Epidemiology* 137:270-80, 1993.

Nabulsi AA, Folsom AR, White A, Patsch W, Heiss G, Wu KK, Szklo M. Association of hormone-replacement therapy with various cardiovascular risk factors in postmenopausal women. The Atherosclerosis Risk in Communities Study. *NEJM* 328(15):1069-75, 1993.

Newman B, Mayer EJ, Selby JV. Risk factors for NIDDM: Evidence from twin studies. In: Leslie, RDG (ed.), *Causes of Diabetes: Genetic and Environmental Factors*. West Sussex, England: John Wiley and Sons, Ltd. 249-67, 1993.

Norman EH, Bordley WC, Hertz-Picciotto I. Rural-urban differences in blood lead levels: North Carolina's childhood screening program. *Pediatrics* 94:1-6, 1994.

Olshan AF, Breslow NE, Falletta J, Grufferman S, Pendergrass T, Robison L, Waskerwitz M, Woods W, Vietti T, Hammond D. Risk factors for Wilms' tumor: Report from the National Wilms' Tumor Study. *Cancer* 72:938-944, 1993.

Rowland AS, Baird DD, Weinberg CR, Shore DL, Shy CM, Wilcox AJ. The effect of occupational exposure to mercury vapour on the fertility of female dental assistants. *Occup Environ Med* 51:28-34, 1994.

Runyan CW, Loomis DP, Butts JD. Practices of county medical examiners in classifying deaths as on the job. *J Occup Med* 36:36-41, 1994.

Rutala WA, Gergen MF, Weber DJ. Evaluation of a rapid readout biological indicator for flash sterilization with three biological indicators and three chemical indicators. *Hosp Epidemiol Infect Control* 14:390-394, 1993.

Rutala WA, Gergen MF, Weber DJ. Inactivation of Clostridium difficile spores by disinfectants. *Infect Control Hosp Epidemiol* 14:36-39, 1993.

Rutala WA, Gergen MF, Weber DJ. Sporicidal activity of chemical sterilents used in hospitals. *Infect Control Hosp Epidemiol* 14:713-718, 1993.

Sarasua S, Savitz DA. Cured and broiled meat consumption in relation to childhood cancer. *Cancer Causes & Control* 5:141-148, 1994.

Savitz DA. Health effects of electric and magnetic fields: overview of research recommendations. *Environmental Health Perspectives* 101:71-72, 1993.

Savitz DA. Epidemiologic studies of electric and magnetic fields and cancer: strategies for extending knowledge. *Environmental Health Perspectives* 101:83-91, 1993.

Savitz DA. Is significance testing useful in interpreting data? *Reproductive Toxicology* 7:95-100, 1993.

Savitz DA. Overview of epidemiologic research on electric and magnetic fields and cancer. *American Industrial Hygiene Association Journal* 54:197-204, 1993.

Savitz DA, Boyle CA, Holmgren P. Prevalence of depression among electrical workers. *American Journal of Industrial Medicine* 25:165-76, 1994.

Savitz DA, Brett KM, Evans LE, Bowes W. Medically treated miscarriage among Black and White women in Alamance County, North Carolina, 1988-1991. *American Journal of Epidemiology* 139:1100-1106, 1994.

Savitz DA, Kaune WT. Childhood cancer in relation to a modified residential wire code. *Environmental Health Perspectives* 101:76-80, 1993.

Savitz DA, Pearce N, Poole C. Update on methodological issues in the epidemiology of electromagnetic fields and cancer. *Epidemiologic Reviews* 15:558-566, 1993.

Savitz DA, Sonnenfeld NL, Olshan AF. Review of epidemiologic studies of paternal occupational exposure and spontaneous abortion. *American Journal of Industrial Medicine* 25:361-83, 1994.

Savitz DA, Thang NM, Swenson IE, Stone EM. Infant and childhood mortality in relation to the Vietnam war. *American Journal of Public Health* 83:1134-8, 1993.

Savitz DA, Tolo K-A, Poole C. Statistical significance testing in the American Journal of Epidemiology, 1970 to 1990. *American Journal of Epidemiology* 139:1047-1052, 1994.

Schaad, MC, Chen, W, Peel S, Baric RS. Studies into the mechanism of MHV transcription. *Adv Exp Med Biol* 342:85-91, 1993.

Schaad, MC, Baric, RS. Evidence for new transcriptional units encoded at the 3'end of the MHV genome. *Virology* 196:190-198, 1993.

Schmitz J, Gertis KS, Mauney C, Stamm LV, Folds JD. Laboratory diagnosis of congenital syphilis by IgM and IgA Western blotting. *Clin Diag Lab Immunol* 1:32-37, 1994.

Schober EA, Kusy RP, Whitley JQ, Savitz DA. Effect of thickness on the fracture characteristics of fetal membranes. *Journal of Materials Science: Materials in Medicine* 5:130-137, 1994.

Schoenbach VJ, Landis SE, Weber DE, Mittal M, Koch GG, Levine PH. HIV seroprevalence in sexually transmitted disease clients in a low-prevalence Southern state: evidence of endemic sexual transmission. *Annals of Epidemiology* 3:281-288, 1993.

Schreiner PJ, Morrisett JD, Sharrett AR, Patsch W, Tyroler HA, Wu K, Heiss G. Lipoprotein[a] as a risk factor for preclinical atherosclerosis. *Arteriosclerosis and Thrombosis* 13:826-833, 1993.

Selby JV, Austin MA, Newman B, Zhang D, Quesenberry CP, Mayer EJ, Krauss RM. LDL subclass phenotypes and the insulin resistance syndrome in women. *Circulation* 88:381-7, 1993.

Shen CY, Chang SF, Chao MF, Yang SL, Lin GM, Chang WW, Wu CW, Yen MS, Ng HT, Thomas J, Huang ES. Cytomegalovirus recurrence in seropositive pregnant women attending obstetric clinics. *J Med Virol* 41:24-9, 1993.

Sheppa CM, Stevens J, Philbrick JP, Canady, M. Effect of a class IV hurricane on emergency department operations. *American Journal of Emergency Medicine* 11: 464-7, 1993.

Shy CM. Epidemiological studies of neurotoxic, reproductive, and carcinogenic effects of complex mixtures. *Environ Health Perspec* 101 (Suppl):183-186, 1993.

Shy CM, Greenberg R, Winn D. Sentinel health events of environmental contamination: A consensus statement. *Environ Health Perspect* 102:316-317, 1994.

Stamm LV and Parrish EA. Characterization of the low molecular mass proteins of virulent *Treponema pallidum*. *Infect Immun* 62:271-279, 1994.

Steadman JS, Lee LW, Smith GJ, Grisham JW. DNA contents and chromosomes of transformed rat liver epithelial cells and of cells from their derived tumors. *Carcinogenesis* 15:963-969, 1994.

Stevens J. Future directions in obesity research. *Festschrift for M. Clinton Miller*, pp. 115-122, 1993.

Stevens J, Gautam SP, Keil JE. Body mass index and fat patterning as correlates of lipids and hypertension in an elderly, biracial population. *Journal of Gerontology: Medical Sciences* 48:M2490-54, 1993.

Stevens J, Gautam SP, Keil JE. Obesity and plasma lipids in the Charleston Heart Study cohort over a 25-year interval. *Nutrition, Metabolism and Cardiovascular Diseases*, 3:17-22, 1993.

Stevens J, Keil JE, Rust PF, Plankey, MW, Tyroler HA, Davis CE. Black women have less abdominal fat than white women of the same relative weight. *Journal of Clinical Epidemiology* 47:495-499, 1994.

Stevens J, Keil JE, Tyroler HA. How was "race" determined? *Archives of Internal Medicine* 153:263-264, 1993.

Stevens J, Kumanyika SK, Keil JE, Seibert LB. Body size perceptions and eating attitudes in elderly men. *Obesity Research* 2:127-134, 1994.

Stevens J, Plankey M. The conicity index. *International Journal of Obesity* 17:727, 1993.

Tidwell RR, Jones SK, Naiman NA, Berger LC, Brake WB, Dykstra CC, Hall JE. Activity of cationically substituted bis-benzimidazoles against experimental *Pneumocystis carinii* pneumonia. *Antimicrob Agents Chemother* 37:1713-1716, 1993.

Thomas JC, Bendana N, Waterman SW, et al. Meningococcal disease in Los Angeles County, 1981-1990. *Am J Public Health* 83:1790-1, 1993.

Tyroler HA, Wing S, Knowles MG. Increasing inequality in coronary heart disease mortality in relation to educational achievement: Profile of places of residence, United States, 1962 to 1987. *Annals of Epidemiology* 3(5):S51-S54, 1993.

Vine MF, Hulka BS, Margolin BH, Truong YK, Hu PC, Schramm MM, Griffith JD, McCann M, Everson RB. Cotinine levels in semen, urine and blood of smokers and nonsmokers. *AJPH* 83(9):1335-1338, 1993.

Vine MF, Margolin BH, Morrison HI, Hulka BS. Cigarette smoking and sperm density: a meta-analysis. *Fertil Steril* 61:35-43, 1994.

Wartenberg D, Savitz DA. Evaluating exposure cutpoint bias in epidemiologic studies of electric and magnetic fields. *Bioelectromagnetics* 14:237-45, 1993.

Weber DJ. Infections acquired in the great outdoors of North Carolina. *North Carolina Medical Journal* 54:537-542, 1993.

Weber DJ, Rutala WA. Environmental issues and nosocomial infections. In Prevention and Control of Nosocomial Infections. Second Edition. Wenzel R (ed.). Williams & Wilkins, Baltimore, 1993.

Weigle KA, Escobar M, Arias AL, Martinez F, Rojas C. A clinical prediction rule for American cutaneous leishmaniasis in Colombia. *Int J Epid* 21:548-558, 1993.

Weigle KA, Santrich C, Martinez F, Valderrama L, Saravia NG. Epidemiology of cutaneous leishmaniasis in Colombia, a longitudinal study of the natural history, prevalence, and incidence of infection and clinical manifestations. *J Infect Dis* 168:699-708, 1993.

Weigle KA, Santrich C, Martinez F, Valderrama L, Saravia NG. Epidemiology of cutaneous leishmaniasis in Colombia: environmental and behavioral risk factors for infection, clinical manifestations and pathogenicity. *J Infect Dis* 168:709-714, 1993.

West SL, Strom BL, Freundlich B, Normand E, Koch G, Savitz DA. Completeness of prescription recording in outpatient medical records. *Journal of Clinical Epidemiology* 47:165-71, 1994.

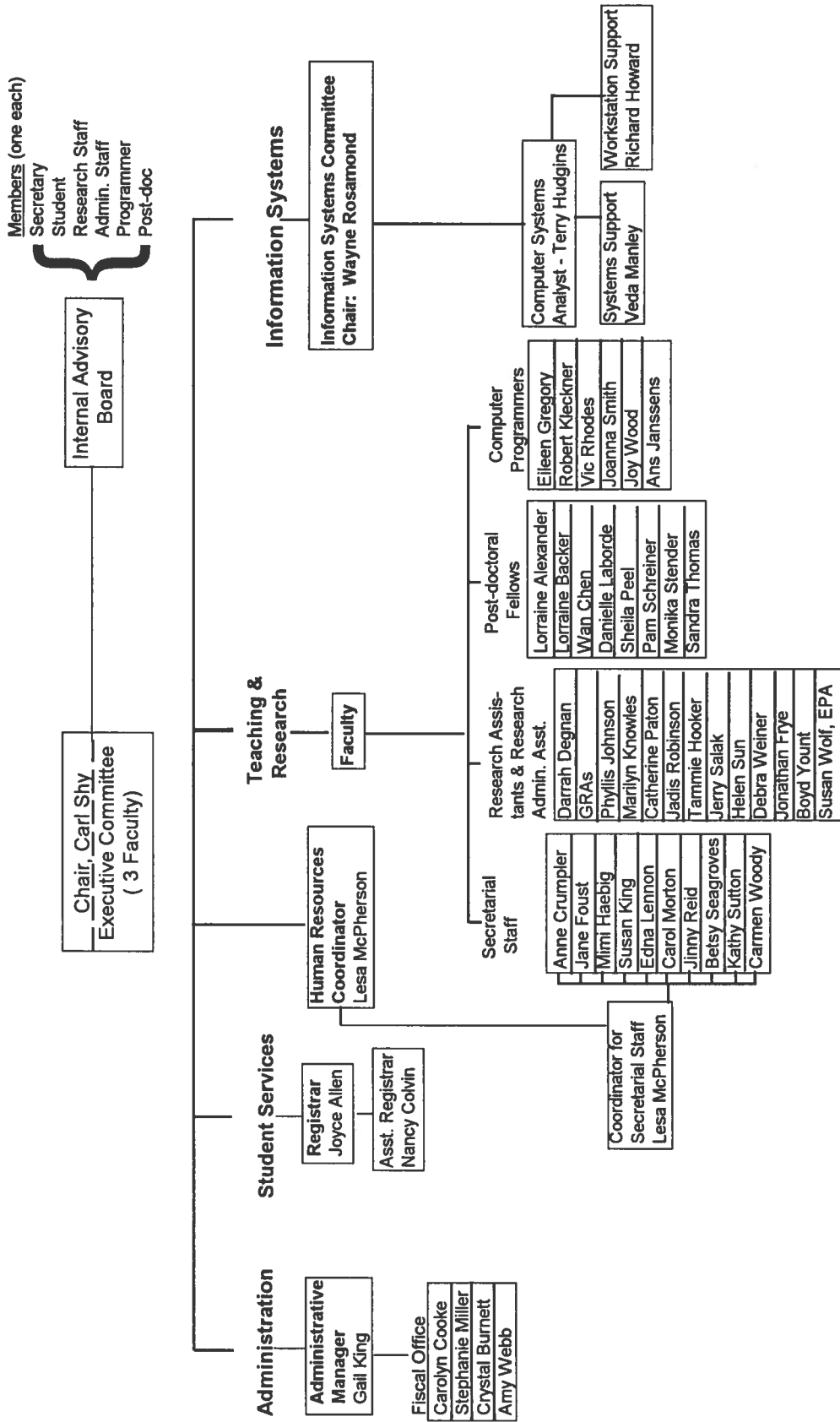
Wing S. A review of recent findings on radiation and mortality at Oak Ridge National Laboratory. In Lengfelder E, Wendhausen H (eds.), *Neue Bewertung des Strahlenrisikos, Proceedings of the International Society of Radiological Protection*, pp 217-228, Munich: Medizin Verlag, 1993.

Wing S, Shy CM, Wood J, Wolf S, Cragle DL, Tankersley W and Frome EL. Job factors, radiation and cancer mortality at Oak Ridge National Laboratory: Follow-up through 1984. *Am J Ind Med* 23:265-279, 1993.

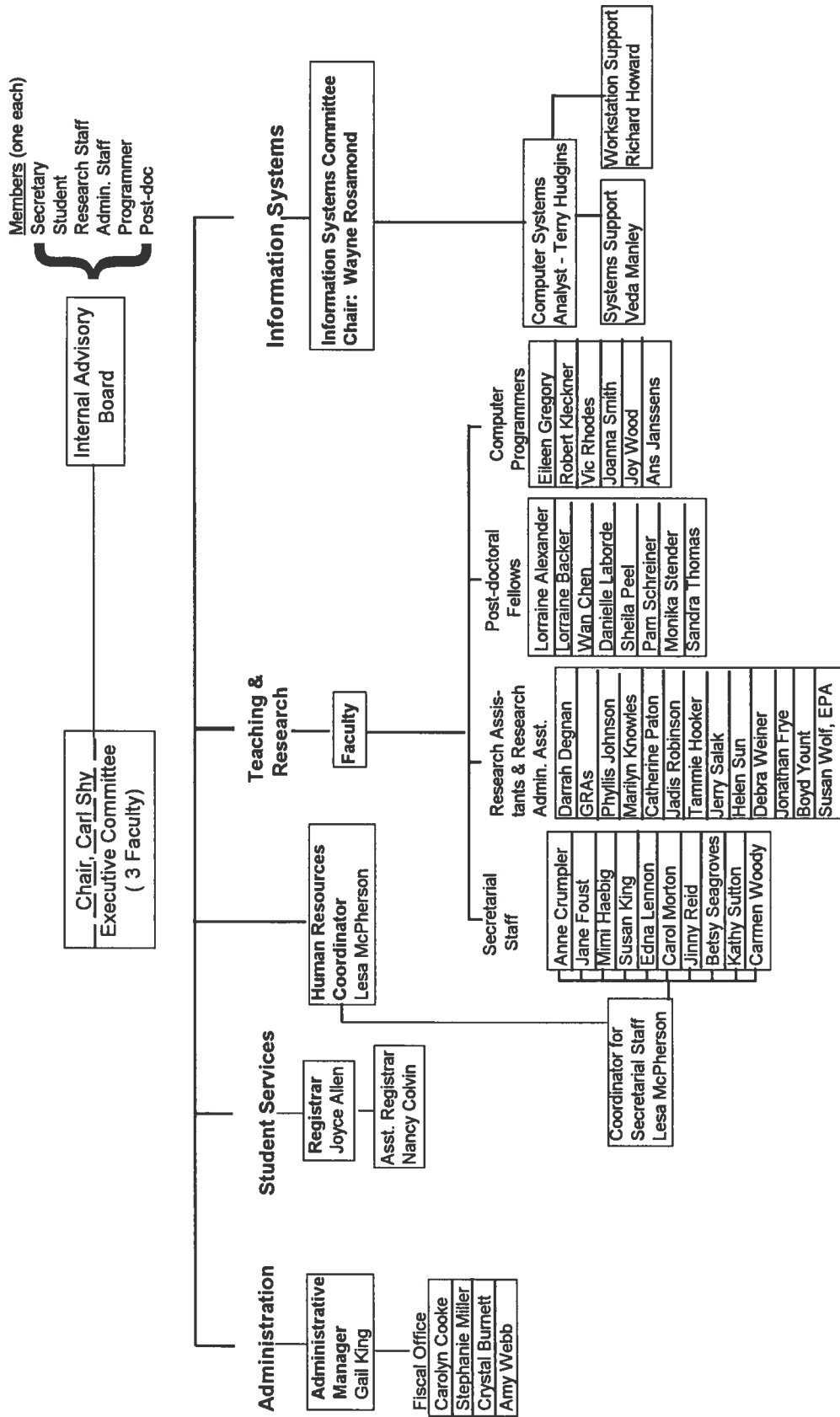
Zhang J, Ratcliffe JM. Environmental tobacco smoke exposure and birthweight in Shanghai. *American Journal of Public Health* 83:207-10, 1993.

Zhang J, Savitz DA. Maternal age and placenta previa: a population-based case-control study. *American Journal of Obstetrics and Gynecology* 168:641-5, 1993.

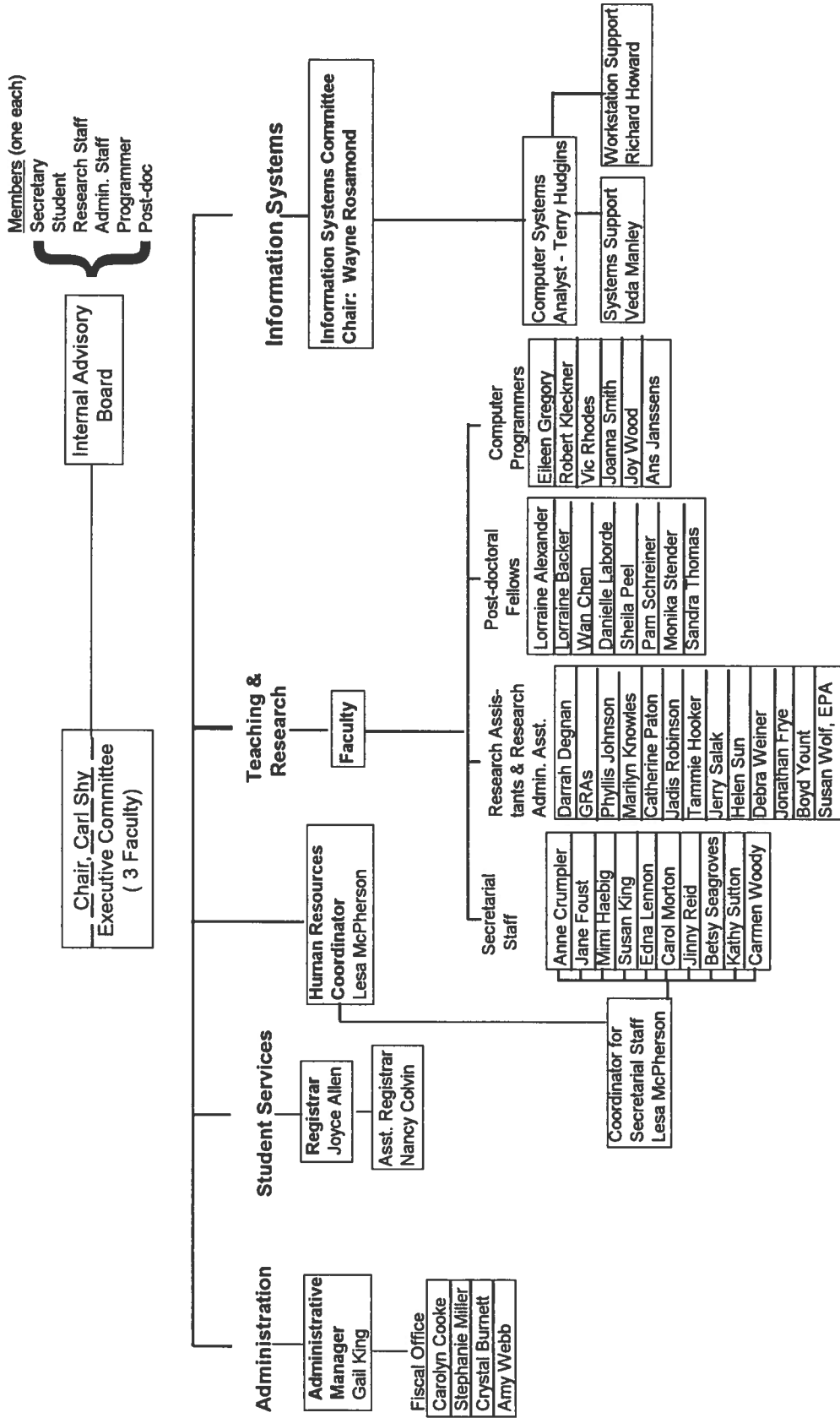
Department of Epidemiology 1993-1994 Organization Chart



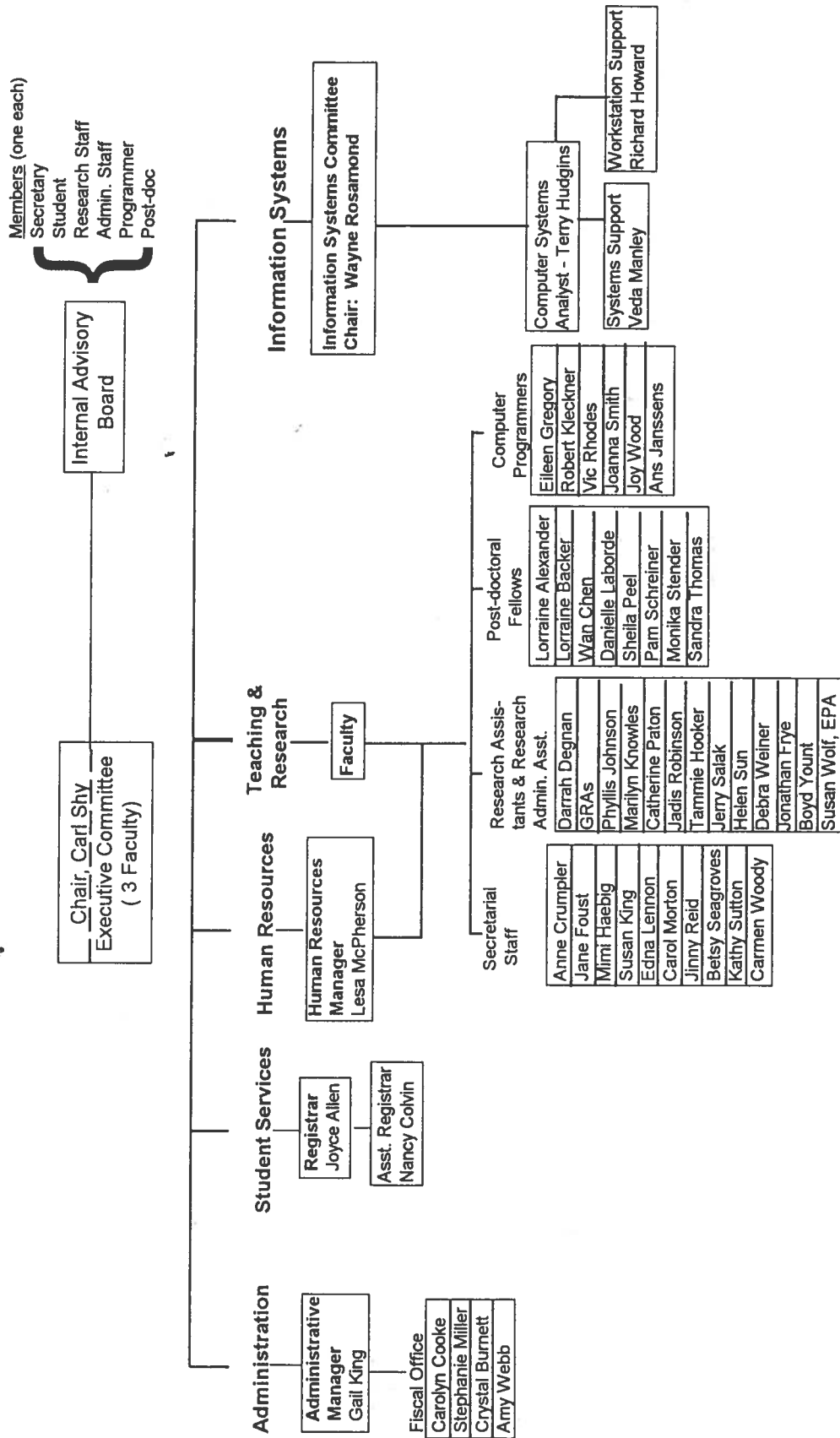
Department of Epidemiology 1993-1994 Organization Chart



Department of Epidemiology 1993-1994 Organization Chart



Department of Epidemiology 1993-1994 Organization Chart



Department of Epidemiology 1993-1994 Organization Chart

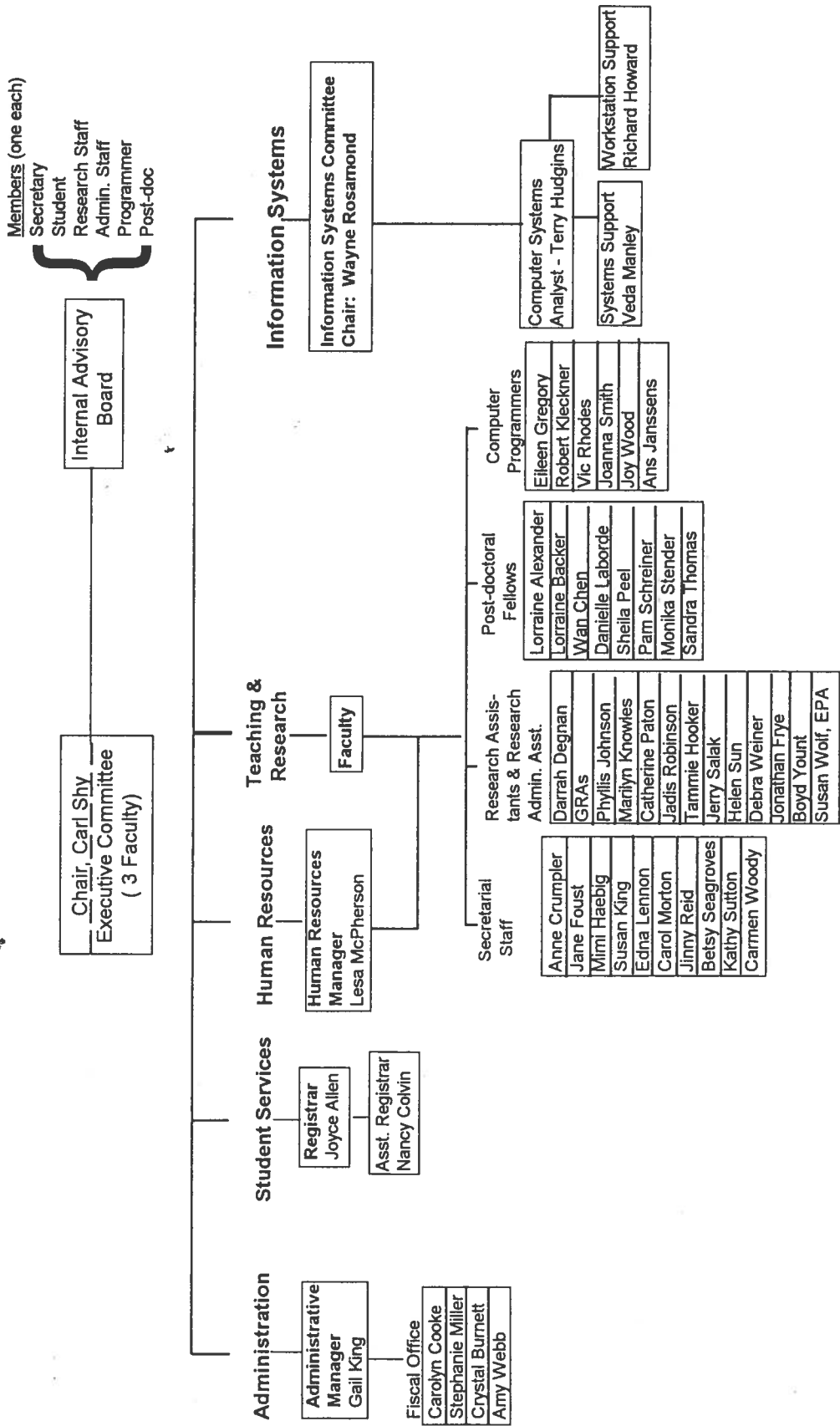


TABLE 10
 PUBLICATIONS OF FACULTY BY DEPARTMENT
 1993-94

<u>Department/Curriculum</u>	<u>No. Faculty</u>	<u>No. Publishing</u>	<u>No. Publications</u>
Health Policy and Administration			
Biostatistics			
Environmental Sciences and Engineering		25	122
Epidemiology	31		
Health Behavior and Health Education			
Maternal and Child Health			
Public Health Nursing			
Nutrition			
TOTAL			

TABLE 8
 FACULTY CHANGES BY DEPARTMENT*
 1993-94

Department/Curriculum	Additions	Promotions	Leaves	Resignations	Retirements	Deaths
Health Policy and Administration						
Biostatistics						
Environmental Sciences and Engineering						
Epidemiology	4	1	2	0	0	0
Health Behavior and Health Education						
Maternal and Child Health						
Public Health Nursing						
Nutrition						
TOTAL						

*Full-time faculty only. See individual departments for rank and specialization.