

epidemiology

in a

changing world



american
college of
epidemiology

annual
scientific
sessions

september 24-26, 2000

ritz-carlton buckhead
atlanta, georgia

general information



american college of epidemiology

*The professional
organization
dedicated to
continued education
and advocacy for
epidemiologists in
their efforts to
promote the public
health.*

www.acepidemiology.org

officers and board members

officers

President	Dale P. Sandler, Ph.D., National Institute of Environmental Health Sciences
President-Elect	Jonathan M. Samet, M.D., M.S., Johns Hopkins University, School of Hygiene & Public Health
Past-President	Robert A. Hiatt, M.D., Ph.D., National Cancer Institute, NIH
Secretary	John F. Acquavella, Ph.D., Monsanto Company
Treasurer	Elizabeth T.H. Fontham, M.P.H., Dr.P.H., LSU Medical Center

board members

Aaron E. Blair, Ph.D., National Cancer Institute, NIH
Vivien W. Chen, Ph.D., Louisiana State University Medical Center
Ralph R. Frerichs, D.V.M., Dr.P.H., UCLA School of Public Health
Patricia Hartge, Sc.D., National Cancer Institute, NIH
Clark W. Heath, Jr., M.D., American Cancer Society, retired
Carol J. Rowland Hogue, Ph.D., Emory University
Martha S. Linet, M.D., National Cancer Institute, NIH
Rosanne B. McTyre, Ph.D., The Weinberg Group, Inc.
Dixie E. Snider, Jr., M.D., M.P.H., Centers for Disease Control & Prevention
Brian L. Strom, M.D., M.P.H., University of Pennsylvania, School of Medicine
Douglas L. Weed, M.D., Ph.D., National Cancer Institute, NIH

program committee

Rosanne B. McTyre, Ph.D.	Patricia Hartge, Sc.D.
Eugenia E. Calle, Ph.D.	James J. Collins, Ph.D.
Gina D. Etheredge, Ph.D.	Marlene B. Goldman, Sc.D.
Maureen C. Hatch, Ph.D.	Carol J. Rowland Hogue, Ph.D.
James M. Hughes, M.D.	Richard A. Kaslow, M.D., M.P.H.
Sandra Melnick, Dr.P.H.	Dixie Edward Snider, Jr., M.D., M.P.H.

accommodations

The site of the 2000 Annual Meeting is the Ritz-Carlton Buckhead, located in Atlanta, Georgia. The specially negotiated room rate for ACE meeting attendees is \$185 per night for either a single or double room. The special rate is based on space availability, so please reserve early. Call (404) 237-2700 or (800) 241-3333 to make your reservations. In order to receive the College's rate please mention that you are calling for the American College of Epidemiology Annual Meeting. The hotel must receive reservations by September 3, 2000.

specially reduced airfares

For your convenience, Conference Travel, Ltd., has negotiated discount airfares with Delta Airlines Inc. There is a 5% discount off the lowest applicable fare or a 10% discount on a full coach fare. Any reservation made at least 60 days in advance will receive an additional 5% off the above applicable discount. These rates are attainable only through Conference Travel. To make your reservation for the ACE Annual Conference, call Conference Travel at (800) 448-6989 or (919) 787-5181. Offices are open Monday through Friday from 8:45 am to 5:30 p.m. EDT. The College benefits financially from every booking made through Conference Travel. Early bookings are encouraged.

Front Cover: Built in 1889, the Georgia State Capitol is topped with gold mined from Dahlonega, Georgia, the site of the nation's first gold rush.

Below: The Fountain of Rings, in Centennial Olympic Park, has become one of the most frequented gathering spots for visitors and is open year-round.

(Courtesy of the Atlanta Convention and Visitors Bureau)



pre-conference workshops

workshop 1 — epidemiologic analysis of complex sample surveys

Below: Redeveloped and opened in June 1989, the Underground Atlanta entertainment complex features 100 specialty shops, 20 restaurants and nightclubs, and 22 food court vendors.

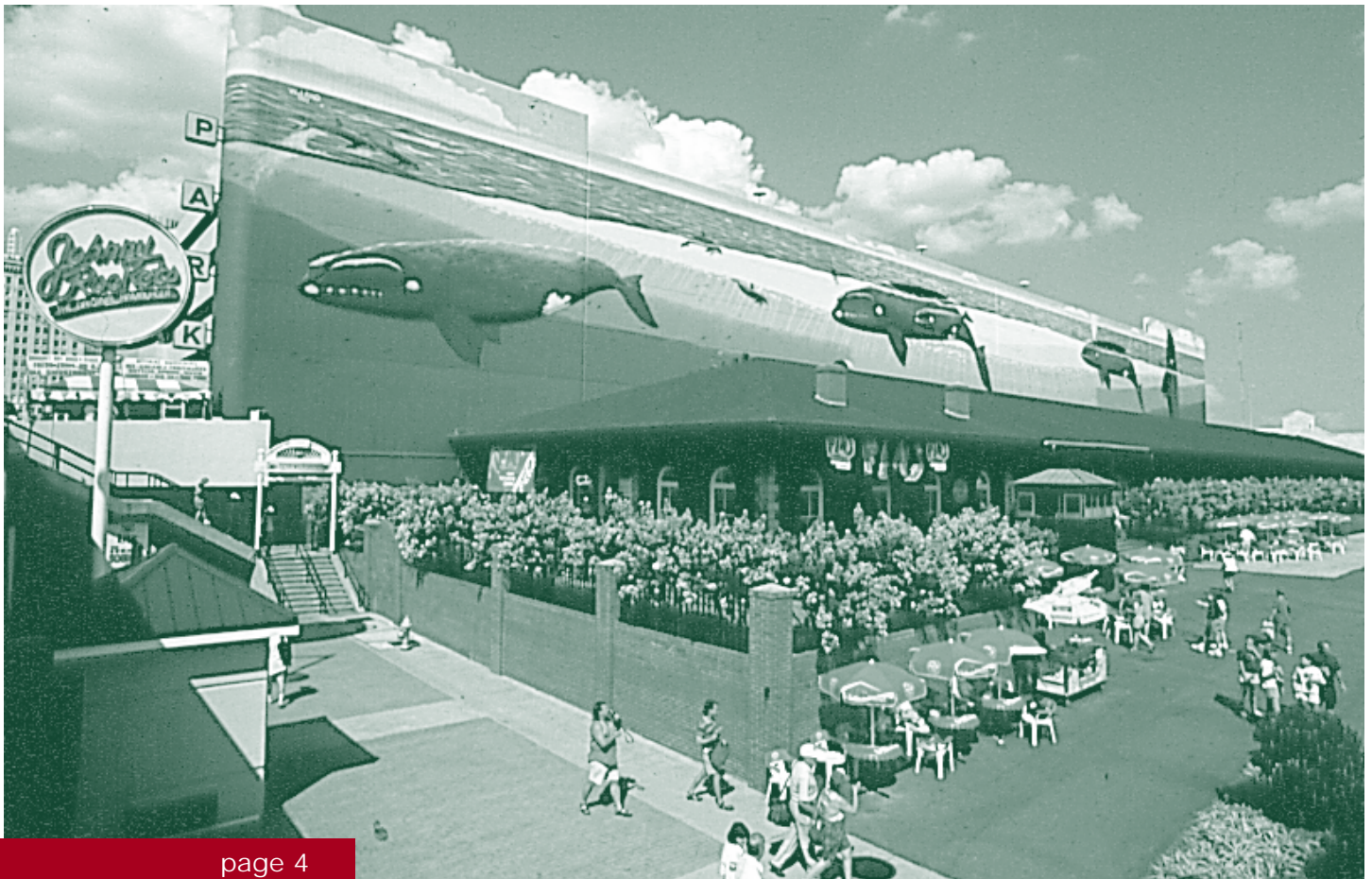
(Courtesy of the Atlanta Convention and Visitors Bureau)

faculty

Donna Brogan, Ph.D., Professor of Biostatistics, Rollins School of Public Health of Emory University, Atlanta, Georgia

9 a.m. - 5 p.m.

Many epidemiologists conduct primary or secondary analyses of sample survey data. Specialized analytical software usually is needed because complex sample survey designs deviate from simple random sampling. Common deviations are unequal selection probabilities, stratification, and clustering of elements.



the goal of this workshop is to provide participants with:

- a review of general concepts and terminology of sample surveys, as a basis for using SUDAAN
- a summary of the structure and design of the software package SUDAAN
- an explanation of syntax for describing a specific sample survey design to SUDAAN. Illustrative examples will include NHANES-III, PRAMS, BRFSS and NHIS.
- instruction for using two PROCs for descriptive analyses: DESCRIPT and CROSSTAB. One modeling PROC will be discussed: LOGISTIC REGRESSION. Datasets for illustrating these PROCs primarily will be NHANES-III and PRAMS

workshop 2 — design and analysis of cluster randomization trials in health research

faculty

Allan Donner, Ph.D., Department of Epidemiology and Biostatistics, University of Western Ontario, London, Canada

Neil Klar, Ph.D., Department of Epidemiology and Biostatistics, University of Western Ontario, London, Canada

9 a.m. - 5 p.m.

Randomized trials of public health interventions often require that clinics or sites, rather than individuals, be randomized. For example, the randomization unit for an evaluation trial of a new antenatal care program, sponsored by the Special Program of Research, Development and Research Training in Human Reproduction, and WHO's Division of Reproductive Health (Technical Support), was the antenatal care clinic, with 53 clinics located in four countries randomly allocated to provide either the new program or the traditional program currently in use.

Specific methodologies have been developed to design and analyze such cluster randomization trials. Drs. Donner and Klar have contributed a textbook on this topic, "Design and Analysis of Cluster Randomization Trials in Health Research," to be published in July 2000, by Arnold Press. In conjunction with the World Health Organization, they have also developed a software package, Acluster, linked to the book.

goals of this workshop:

- introduce concepts involved in the design and analysis of cluster randomized trials
- distribute beta versions of Acluster and illustrate its use with examples from recent trials

thanks to
our sponsors!

*Centers for Disease
Control & Prevention*

*Merck Research
Laboratories*

*Rollins School of
Public Health of
Emory University*

workshop 3 – molecular genetics for epidemiologists: from the basics to advanced topics

Faculty

Jack A. Taylor, M.D., Ph.D., Chief, Molecular and Genetic Epidemiology Section, Laboratory of Molecular Carcinogenesis and Senior Investigator, Epidemiology Branch, NIEHS, NIH

morning: 9 a.m. - 12 noon

afternoon: 1 p.m. - 5 p.m.

This will be a two-part workshop. The morning will consist of a review of molecular genetics designed to provide a background in the techniques of DNA analysis for epidemiologists. The workshop will provide a basic background for those who wish a clearer understanding of concepts and techniques used in molecular epidemiology, and a basis from which to move on to the afternoon course on advanced topics.

The afternoon will be an extension of the morning workshop and will cover selected advanced and emerging areas of genetics and genomics. The course will focus initially on topics related to DNA polymorphism, mutation, and DNA repair, and discuss application of these issues to the study of disease etiology with a focus on cancer. DNA chips, expression arrays, and other technologies that have gathered considerable interest within the epidemiology community, although they have seldom been applied in epidemiologic studies. The course will provide the epidemiologist with a conceptual understanding of these technologies and the current limitations on their application. Finally, the workshop will try to anticipate near and intermediate term applications of emerging genomic technologies on epidemiologic studies, and suggest practical aspects of tissue procurement and storage, and consent.

goals of this workshop:

- review selected technical topics of DNA of interest to the epidemiologist including, polymorphism discovery, spontaneous and induced mutation, DNA repair, DNA as a lifetime dosimeter of exposure
- describe the basis of emerging technologies for genetic analysis including DNA chips, expression arrays, and mass spectroscopy
- discuss how such technologies and the field of genomics may be applied in epidemiologic studies and tissue sample requirements

preliminary program

monday, september 25

- 8:30 – 8:40 am Welcome and Introduction
Dale Sandler, Ph.D., ACE President
- 8:40 – 8:50 am Welcome to Atlanta
*Dixie E. Snider, Jr., M.D., M.P.H.,
CDC, Meeting Host*
- 8:50 – 9:00 am Introduction of Keynote
Speaker
*Sandra Melnick, Dr.P.H., National
Cancer Institute*
- 9:00 – 9:45 am Keynote Address:
Bioterrorism, Infectious
Disease and Epidemiology
*Michael T. Osterholm, Ph.D., M.P.H.,
Chairman and CEO, ICAN, INC.*
- 9:45 – 10:00 am Coffee Break
- 10:00 – 12:00 N Symposium I –
Infection and Protection:
Current Challenges to Epi-
demiology and Public Health
Moderator: James M. Hughes, M.D., CDC
- Infectious Causes of Chronic Disease
*Thomas C. Quinn, M.D., Johns Hopkins Univ.
School of Medicine*
- West Nile Virus in New York City
Denis Nash, Ph.D., M.P.H., CDC/NYC Department of Health
- Encephalitis: Nipah Virus in Malaysia and Singapore
Clarence J. Peters, M.D., CDC
- Childhood and Adult Immunization Policy Issues
Samuel L. Katz, M.D., Duke Univ. School of Medicine



Above: The famous marquee of the Fox Theatre adorns Peachtree Street. The theatre brings some of the world's greatest concerts, musical performances and plays to Atlanta.

(Courtesy of the Atlanta Convention and Visitors Bureau)

- 12:00 – 2:00 pm Lunch Roundtable Workshop:
Objectivity, Conflict of Interest, and Epidemiology
Informal Roundtable discussions led by Fellows of the College.
(By reservations only. Must pre-register for this workshop.)
Moderators:
Rosanne B. McTyre, Ph.D., The Weinberg Group, Inc.
Patricia Hartge, Sc.D., National Cancer Institute
- 2:00 – 4:00 pm Symposium II – Epidemiologists Look at Society:
Social Class, Race, Gender, Inequality, and Disease
Moderator: Eugenia E. Calle, Ph.D., American Cancer Society
- The Measurement of Social Class and Race in
Epidemiologic Studies: New Directions
Lisa Berkman, Ph.D., Harvard Univ. School of Public Health
- The Epidemiology of Intimate Partner Violence: We're
Not There Yet
Lemyra DeBruyn, Ph.D., CDC
- Upstream and Downstream Approaches to Inequality
in Health: The Example of Cardiovascular Disease
George A. Kaplan, Ph.D., Univ. of Michigan School of Public Health
- Health and Income Inequality
Ichiro Kawachi, Ph.D., Harvard Univ. School of Public Health
- 4:00 – 5:00 pm Business Meeting for ACE Members
- 5:00 – 7:00 pm Poster Session and Reception
Prizes will be awarded for the best student poster and the best
general poster.
Chairs:
Marlene Goldman, Sc.D., New England Research Institutes
Betsy Foxman, Ph.D., Univ. of Michigan School of Public Health
- 7:00 – 9:00 pm Continuing Poster Viewing

Dinner on your own

tuesday, september 26

7:30 – 9:00 am

Breakfast Roundtables

*Chair: Maureen C. Hatch, Ph.D.,
Mt. Sinai School of Medicine*

Scientific Publication: The Ongoing Revolution

*Martha S. Linet, M.D., National
Cancer Institute; ACE Publications
Committee*

*Richard Rothenberg, M.D., Emory
Univ. School of Medicine; Editor-in-
Chief, Annals of Epidemiology*

Current Ethical Challenges in Epidemiology

*Douglas L. Weed, M.D., Ph.D.,
National Cancer Institute;
ACE Committee on Ethics and
Standards of Practice*

Medical Record Privacy: New Laws and Practices

*Robert A. Hiatt, M.D., Ph.D.,
National Cancer Institute; ACE
Policy Committee*

Diversity in Epidemiology: Finding Ways to Improve

*Vickie M. Mays, Ph.D., University of California Los Angeles
Victor J. Schoenbach, Ph.D., University of North Carolina at
Chapel Hill*

Response Rates: Should We Worry?

Shanna H. Swan, Ph.D., Univ. of Missouri at Columbia

The Ethics of Infectious Disease Epidemiology

*Elizabeth A. Bancroft, M.D., S.M., CDC/L.A. County Department
of Health Services*

Women's Health

*Maureen C. Hatch, Ph.D., Mt. Sinai School of Medicine
Marlene B. Goldman, Sc.D., New England Research Institutes*



Above: In 1997, the Atlanta Braves moved to their new home at Turner Field, formerly the Olympic Stadium. Turner Field, a baseball entertainment complex, was a definite crowd-pleaser during the 1997 season.

(Courtesy of the Atlanta Convention and Visitors Bureau)

Can Intragroup Comparisons Be Used To Test Causal Models Of Diversity?

Carol J. Rowland Hogue, Ph.D., M.P.H., Emory Univ. School of Public Health

9:00 – 9:15 am Break

9:15 – 11:15 am Symposium III –
Pestilence and Molecular Epidemiology: New Tools
for Understanding Agent-Host Interactions

Moderator: Dixie E. Snider, Jr., M.D., M.P.H., CDC

Genetic Determinants in HIV Infection

Richard A. Kaslow, M.D., M.P.H., Univ. of Alabama at Birmingham

Molecular Aspects of EBV and Lymphoma

Richard F. Ambinder, M.D., Ph.D., Johns Hopkins Univ. School of Medicine

Host Genes and TB Infection

Janet M. McNicholl, M.D., CDC

Host Genes and Malaria

Venkatachalam Udhayakumar, Ph.D., Division of Parasitic Diseases, CDC

11:15 – 11:30 am Break

11:30 – 12:00 N 2000 Student Prize Paper
TBA

12:00 – 2:00 pm Banquet Lunch and Poster Prize Awards

2:00 – 4:00 pm Plenary Debate – Motion: Epidemiologists Should/
Should Not Always Put Their Data in a Public Archive

Moderator:

Gina D. Etheredge, Ph.D., Tulane Univ. School of Public Health and Tropical Medicine

Debaters:

Jonathan M. Samet, M.D., M.S., Johns Hopkins Univ. School of Hygiene and Public Health

Christine A. Bachrach, Ph.D., National Institute of Child Health and Human Development

Manning Feinleib, M.D., Dr.P.H., Johns Hopkins Univ. School of Hygiene and Public Health

4:00 pm Adjourn

Back Cover: Atlanta's skyline is the tower of the South. Largely designed by architect John Portman, the spectacular view captures the southern heart and the urban advancement of this ever-growing city.

(Courtesy of the Atlanta Convention and Visitors Bureau)

registration form

american college
of epidemiology

annual scientific sessions

Pre-registration closes on September 5, 2000. Registrations received after September 5 will be processed at on-site rates. Refunds will be issued for cancellations received in writing by September 15, 2000.

Please print or type the following information. It will be used to print your name badge and mail your confirmation.

Name _____
first middle last degree

Institution _____

Address _____

City _____ State _____ Zip _____

Daytime Telephone _____ Fax _____

Email _____

september 24-26, 2000
ritz-carlton buckhead
atlanta, georgia

workshop registration

Three workshops will be held on Sunday, September 24. Enrollment is limited. Please indicate your 1st, 2nd, and 3rd choices. You will be assigned your highest priority available.

- Workshop 1: Epidemiologic Analysis of Complex Sample Surveys
- Workshop 2: Design and Analysis of Cluster Randomization Trials in Health Research
- Workshop 3: Molecular Genetics for Epidemiologists: From the Basics to Advanced Topics (BOTH SESSIONS)
- Workshop 3-A: Molecular Genetics for Epidemiologist: MORNING SESSION (Basic Topics)
- Workshop 3-B: Molecular Genetics for Epidemiologist: AFTERNOON SESSION (Advanced Topics)

Workshops 1, 2, or 3 (morning and afternoon)

Member \$ 95 \$ _____

Non-Member \$145 \$ _____

Student* \$ 55 \$ _____

Workshops 3A (morning) or 3B (afternoon)

Member \$ 63 \$ _____

Non-Member \$ 97 \$ _____

Student* \$ 37 \$ _____

(A \$50 surcharge will be assessed for on-site registration.)

Lunch Roundtable Workshop — Monday, September 25
(must pre-register for this workshop — includes lunch)

..... \$16 \$ _____

Questions? Please call us at (919) 787-5181 or email us at
info@acepidemiology.org

For Membership Information — Please visit ACE Web site at
www.acepidemiology.org

general registration

Registration includes all sessions (except workshops), breaks, roundtable breakfast, banquet, and poster reception.

	Before 9/5	After 9/5 and On-site	
Member	\$225	\$275	\$ _____
Non-Member	\$310	\$360	\$ _____
Student*	\$105	\$135	\$ _____

*Proof of student status is required

Registrations received after 9/15 will be processed on-site.

banquet

Do you plan to attend the banquet luncheon on Tuesday,
September 26? Yes No

TOTAL ENCLOSED \$ _____

special services

- Please check here if you require special accommodations to fully participate. Attach a written description.

payment information

Check or credit card information must be received with registration form.
Please either fax OR mail registration form. Do not fax AND mail
registration form! Thank you.

- Check (US currency, payable to American College of Epidemiology)
- MasterCard Visa American Express

Authorized Card Holder (Please print):

Card Number: _____ Exp. Date: _____

Please Mail or Fax This Form with Payment to:
American College of Epidemiology
4101 Lake Boone Trail, Suite 201
Raleigh, North Carolina 27607

Phone: (919) 787-5181
Fax: (919) 787-4916

american college of epidemiology
4101 lake boone trail
suite 201
raleigh, north carolina 27607

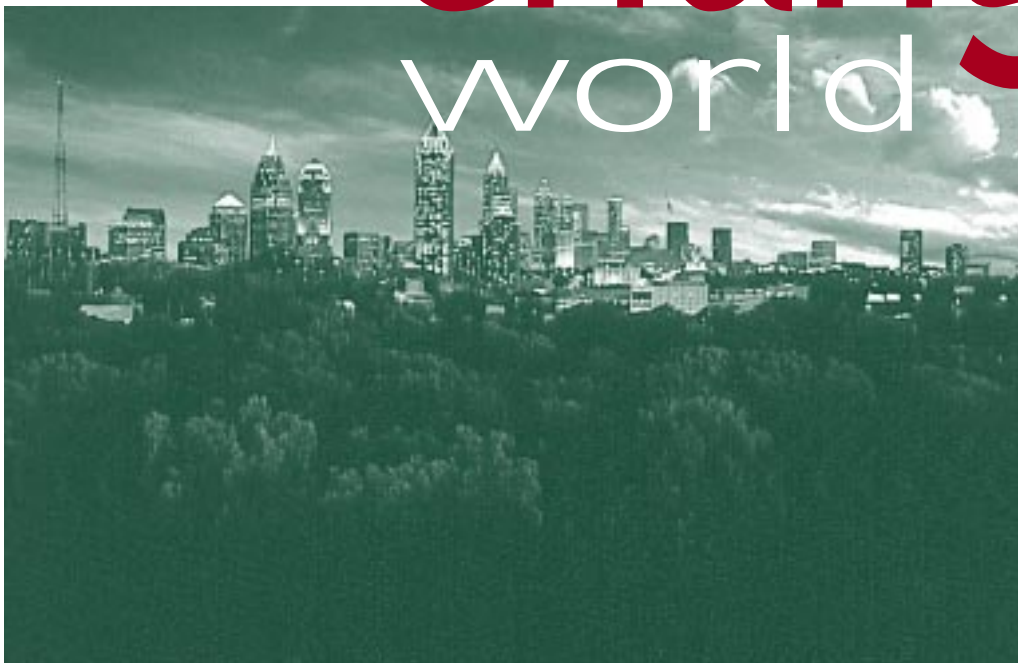
bulk rate
us postage
paid
raleigh, nc
permit #1998

e p i d e m i o l o g y

in a

changing

world



american college of
epidemiology

annual
scientific
sessions

september 24-26, 2000
ritz-carlton buckhead
atlanta, georgia